

# ZPR1 rabbit pAb

Cat No.:ES12077

For research use only

## Overview

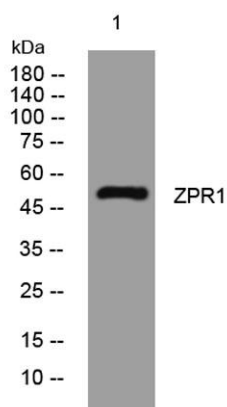
Product Name	ZPR1 rabbit pAb
Host species	Rabbit
Applications	WB
Species Cross-Reactivity	Human; Mouse
Recommended dilutions	WB 1: 500-2000
Immunogen	Synthesized peptide derived from human ZPR1 AA range: 277-327
Specificity	This antibody detects endogenous levels of ZPR1 at Human/Mouse
Formulation	Liquid in PBS containing 50% glycerol, 0.5% BSA and 0.02% sodium azide.
Storage	Store at -20°C. Avoid repeated freeze-thaw cycles.
Protein Name	ZPR1
Gene Name	ZNF259 ZPR1
Cellular localization	Nucleus. Nucleus, nucleolus. Nucleus, gem. Nucleus, Cajal body. Cytoplasm, perinuclear region. Cytoplasm. Cell projection, axon . Cell projection, growth cone . Colocalized with SMN1 in Gemini of coiled bodies (gems), Cajal bodies, axon and growth cones o
Purification	The antibody was affinity-purified from rabbit antiserum by affinity-chromatography using epitope-specific immunogen.
Clonality	Polyclonal
Concentration	1 mg/ml
Observed band	
Human Gene ID	8882
Human Swiss-Prot Number	O75312
Alternative Names	
Background	The protein encoded by this gene is found in the cytoplasm of quiescent cells but translocates to the nucleolus in proliferating cells. The encoded protein interacts with survival motor neuron protein (SMN1)





**ELK Biotechnology**

to enhance pre-mRNA splicing and to induce neuronal differentiation and axonal growth. Defects in this gene or the SMN1 gene can cause spinal muscular atrophy. Two transcript variants encoding different isoforms have been found for this gene. [provided by RefSeq, Nov 2015],



Western blot analysis of lysates from MCF-7 cells, primary antibody was diluted at 1:1000, 4° over night



+86-27-59760950

[ELKbio@ELKbiotech.com](mailto:ELKbio@ELKbiotech.com)

[www.elkbiotech.com](http://www.elkbiotech.com)

23-2, No.388 Gaoxin 2nd Road, Wuhan East Lake Hi-tech Development Zone, Hubei, P.R.C.