

# TRIM27 rabbit pAb

Cat No.:ES12563

For research use only

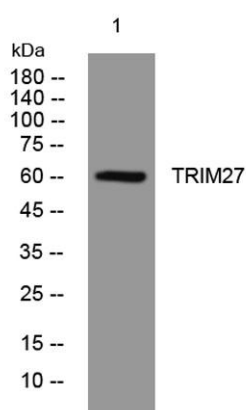
## Overview

Product Name	TRIM27 rabbit pAb
Host species	Rabbit
Applications	WB
Species Cross-Reactivity	Human; Mouse
Recommended dilutions	WB 1:500-2000
Immunogen	Synthesized peptide derived from human TRIM27 AA range: 34-84
Specificity	This antibody detects endogenous levels of TRIM27 at Human/Mouse
Formulation	Liquid in PBS containing 50% glycerol, 0.5% BSA and 0.02% sodium azide.
Storage	Store at -20°C. Avoid repeated freeze-thaw cycles.
Protein Name	TRIM27
Gene Name	TRIM27 RFP RNF76
Cellular localization	Nucleus . Cytoplasm . Nucleus, PML body . Early endosome . Nuclear or cytoplasmic depending on the cell type (By similarity). Colocalized with PML and EIF3S6 in nuclear bodies. Recruited to retromer-containing endosomes via interaction with MAGEL2 (PubMed)
Purification	The antibody was affinity-purified from rabbit antiserum by affinity-chromatography using epitope-specific immunogen.
Clonality	Polyclonal
Concentration	1 mg/ml
Observed band	60kD
Human Gene ID	5987
Human Swiss-Prot Number	P14373
Alternative Names	Zinc finger protein RFP (EC 6.3.2.-) (RING finger protein 76) (Ret finger protein) (Tripartite motif-containing protein 27)
Background	This gene encodes a member of the tripartite motif (TRIM) family. The TRIM motif includes three





zinc-binding domains, a RING, a B-box type 1 and a B-box type 2, and a coiled-coil region. This protein localizes to the nuclear matrix. It interacts with the enhancer of polycomb protein and represses gene transcription. It is also thought to be involved in the differentiation of male germ cells. Fusion of the N-terminus of this protein with the truncated C-terminus of the RET gene product has been shown to result in production of the ret transforming protein. [provided by RefSeq, Jul 2008],



Western blot analysis of lysates from U2OS cells, primary antibody was diluted at 1:1000, 4°over night

