

RAX2 rabbit pAb

Cat No.:ES13456

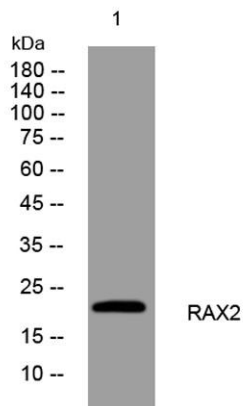
For research use only

Overview

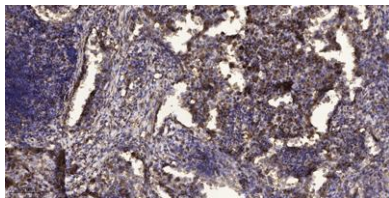
Product Name	RAX2 rabbit pAb
Host species	Rabbit
Applications	WB;IHC
Species Cross-Reactivity	Human;Rat;Mouse;
Recommended dilutions	WB 1:500-2000;IHC-p 1:50-300
Immunogen	Synthesized peptide derived from human RAX2 AA range: 95-145
Specificity	This antibody detects endogenous levels of RAX2 at Human
Formulation	Liquid in PBS containing 50% glycerol, 0.5% BSA and 0.02% sodium azide.
Storage	Store at -20°C. Avoid repeated freeze-thaw cycles.
Protein Name	RAX2
Gene Name	RAX2 QRX RAXL1
Cellular localization	Nucleus .
Purification	The antibody was affinity-purified from rabbit antiserum by affinity-chromatography using epitope-specific immunogen.
Clonality	Polyclonal
Concentration	1 mg/ml
Observed band	
Human Gene ID	84839
Human Swiss-Prot Number	Q96IS3
Alternative Names	
Background	This gene encodes a homeodomain-containing protein that plays a role in eye development. Mutation of this gene causes age-related macular degeneration type 6, an eye disorder resulting in accumulations of protein and lipid beneath the retinal pigment epithelium and within the Bruch's membrane. Defects in this gene can also cause cone-rod dystrophy type 11, a disease characterized by the initial degeneration of cone photoreceptor



cells and resulting in loss of color vision and visual acuity, followed by the degeneration of rod photoreceptor cells, which progresses to night blindness and the loss of peripheral vision. Alternative splicing results in multiple transcript variants. [provided by RefSeq, Jan 2016],



Western blot analysis of lysates from HpeG2 cells, primary antibody was diluted at 1:1000, 4° over night



Immunohistochemical analysis of paraffin-embedded human Squamous cell carcinoma of lung. 1, Antibody was diluted at 1:200(4° overnight). 2, Tris-EDTA,pH9.0 was used for antigen retrieval. 3,Secondary antibody was diluted at 1:200(room temperature, 45min).

