



# ZBPB1 rabbit pAb

Cat No.:ES12078

For research use only

## Overview

Product Name	ZBPB1 rabbit pAb
Host species	Rabbit
Applications	WB
Species Cross-Reactivity	Human; Mouse
Recommended dilutions	WB 1:500-2000
Immunogen	Synthesized peptide derived from human ZBPB1 AA range: 176-226
Specificity	This antibody detects endogenous levels of ZBPB1 at Human/Mouse
Formulation	Liquid in PBS containing 50% glycerol, 0.5% BSA and 0.02% sodium azide.
Storage	Store at -20°C. Avoid repeated freeze-thaw cycles.
Protein Name	ZBPB1
Gene Name	ZBPB ZBPB1
Cellular localization	Cytoplasmic vesicle, secretory vesicle, acrosome membrane ; Peripheral membrane protein . Secreted . First localized in acrosome granule, later migrates to the inner and outer acrosomal membrane. Released after the acrosomal reaction. .
Purification	The antibody was affinity-purified from rabbit antiserum by affinity-chromatography using epitope-specific immunogen.
Clonality	Polyclonal
Concentration	1 mg/ml
Observed band	38kD
Human Gene ID	11055
Human Swiss-Prot Number	Q9BS86
Alternative Names	Zona pellucida-binding protein 1 (Sp38)
Background	ZBPB is one of several proteins that are thought to participate in secondary binding between acrosome-reacted sperm and the egg-specific extracellular matrix, the zona pellucida (McLeskey et al., 1998 [PubMed 9378618]).[supplied by OMIM,

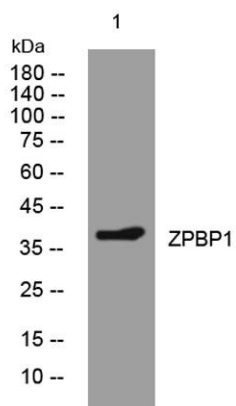




**ELK Biotechnology**

Aug 2008],

Western blot analysis of lysates from KB cells, primary antibody was diluted at 1:1000, 4° over night



+86-27-59760950

ELKbio@ELKbiotech.com

[www.elkbiotech.com](http://www.elkbiotech.com)

23-2, No.388 Gaoxin 2nd Road, Wuhan East Lake Hi-tech Development Zone, Hubei, P.R.C.