

LRIF1 rabbit pAb

Cat No.:ES15109

For research use only

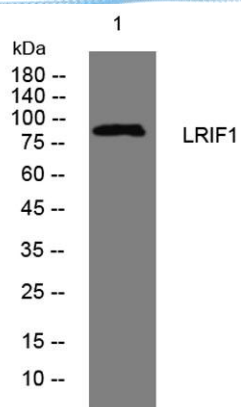
Overview

Product Name	LRIF1 rabbit pAb
Host species	Rabbit
Applications	WB
Species Cross-Reactivity	Human; Mouse;Rat
Recommended dilutions	WB 1:500-2000
Immunogen	Synthesized peptide derived from human LRIF1 AA range: 210-260
Specificity	This antibody detects endogenous levels of LRIF1 at Human/Mouse/Rat
Formulation	Liquid in PBS containing 50% glycerol, 0.5% BSA and 0.02% sodium azide.
Storage	Store at -20°C. Avoid repeated freeze-thaw cycles.
Protein Name	LRIF1
Gene Name	LRIF1 C1orf103 RIF1
Cellular localization	Chromosome . Nucleus matrix . Localizes to Barr body; recruited by SMCHD1. .
Purification	The antibody was affinity-purified from rabbit antiserum by affinity-chromatography using epitope-specific immunogen.
Clonality	Polyclonal
Concentration	1 mg/ml
Observed band	85kD
Human Gene ID	55791
Human Swiss-Prot Number	Q5T3J3
Alternative Names	Ligand-dependent nuclear receptor-interacting factor 1 (Receptor-interacting factor 1)
Background	





ELK Biotechnology



Western blot analysis of lysates from 3T3 cells, primary antibody was diluted at 1:1000, 4° over night



+86-27-59760950

ELKbio@ELKbiotech.com

www.elkbiotech.com

23-2, No.388 Gaoxin 2nd Road, Wuhan East Lake Hi-tech Development Zone, Hubei, P.R.C.