

KTU rabbit pAb

Cat No.:ES15230

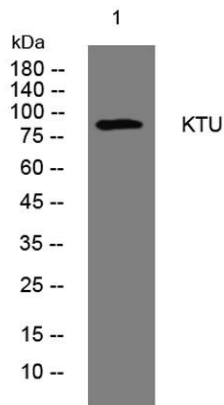
For research use only

Overview

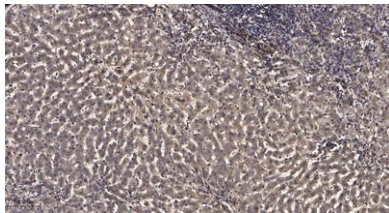
Product Name	KTU rabbit pAb
Host species	Rabbit
Applications	WB;ELISA;IHC
Species Cross-Reactivity	Human; Mouse;Rat
Recommended dilutions	WB 1:500-2000;IHC-p 1:50-300; ELISA 2000-20000
Immunogen	Synthesized peptide derived from human KTU AA range: 610-660
Specificity	This antibody detects endogenous levels of KTU at Human/Mouse/Rat
Formulation	Liquid in PBS containing 50% glycerol, 0.5% BSA and 0.02% sodium azide.
Storage	Store at -20°C. Avoid repeated freeze-thaw cycles.
Protein Name	KTU
Gene Name	DNAAF2 C14orf104 KTU
Cellular localization	Cytoplasm . Dynein axonemal particle . Localizes in the apical cytoplasm around the gamma-tubulin-positive pericentriolar region, not in the cilia. .
Purification	The antibody was affinity-purified from rabbit antiserum by affinity-chromatography using epitope-specific immunogen.
Clonality	Polyclonal
Concentration	1 mg/ml
Observed band	
Human Gene ID	55172
Human Swiss-Prot Number	Q9NVR5
Alternative Names	
Background	This gene encodes a highly conserved protein involved in the preassembly of dynein arm complexes which power cilia. These complexes are found in some cilia and are assembled in the cytoplasm prior to transport for cilia formation. Mutations in this gene have been associated with



primary ciliary dyskinesia. Multiple transcript variants encoding different isoforms have been found for this gene.[provided by RefSeq, Oct 2009],



Western blot analysis of lysates from THP-1 cells, primary antibody was diluted at 1:1000, 4°over night



Immunohistochemical analysis of paraffin-embedded human liver cancer. 1, Antibody was diluted at 1:200(4° overnight). 2, Tris-EDTA,pH9.0 was used for antigen retrieval. 3,Secondary antibody was diluted at 1:200(room temperature, 45min).

