



CALHM1 rabbit pAb

Cat No.:ES20805

For research use only

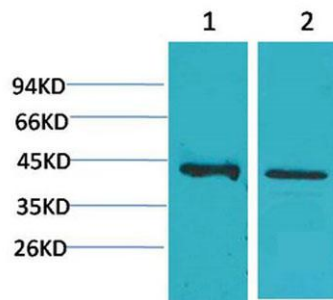
Overview

Product Name	CALHM1 rabbit pAb
Host species	Rabbit
Applications	WB;IHC;IF
Species Cross-Reactivity	Human;Rat
Recommended dilutions	WB: 1:500-1000 IHC: 1:200-500
Immunogen	Synthetic Peptide of CALHM1 AA range: 204-254
Specificity	The antibody detects endogenous CALHM1 protein.
Formulation	Liquid in PBS containing 50% glycerol, 0.5% BSA and 0.02% sodium azide.
Storage	Store at -20°C. Avoid repeated freeze-thaw cycles.
Protein Name	Calcium homeostasis modulator protein 1
Gene Name	CALHM1
Cellular localization	Cell membrane; Multi-pass membrane protein . Endoplasmic reticulum membrane ; Multi-pass membrane protein. Basolateral cell membrane; Multi-pass membrane protein . Colocalizes with HSPA5 at the endoplasmic reticulum (PubMed:18585350). Localizes to the bas
Purification	The antibody was affinity-purified from rabbit antiserum by affinity-chromatography using epitope-specific immunogen.
Clonality	Polyclonal
Concentration	
Observed band	40kD
Human Gene ID	255022
Human Swiss-Prot Number	Q8IU99
Alternative Names	Calcium homeostasis modulator protein 1; Protein FAM26C
Background	calcium homeostasis modulator 1(CALHM1) Homo sapiens This gene encodes a calcium channel that plays a role in processing of amyloid-beta precursor protein. A polymorphism at this locus has been reported to be associated with susceptibility to



late-onset Alzheimer's disease in some populations, but the pathogenicity of this polymorphism is unclear.[provided by RefSeq, Mar 2010],

Western blot analysis of 1) Human Brain Tissue, 2) Rat Brain Tissue using CALHM1 Polyclonal Antibody. Secondary antibody(catalog#:RS0002) was diluted at 1:20000



Immunohistochemical analysis of paraffin-embedded Human Hepatocarcinoma using CALHM1 Polyclonal Antibody.

