

PRAM1 rabbit pAb

Cat No.:ES13971

For research use only

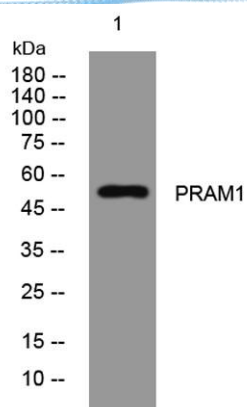
Overview

| | |
|--------------------------|--------------------------------------------------------------------------------------------------------------------------------------------------------------------------------------------------------------------------------------------------------------------------------------------------------------------------------------------|
| Product Name | PRAM1 rabbit pAb |
| Host species | Rabbit |
| Applications | WB |
| Species Cross-Reactivity | Human;Rat;Mouse; |
| Recommended dilutions | WB 1: 500-2000 |
| Immunogen | Synthesized peptide derived from human PRAM1 AA range: 329-379 |
| Specificity | This antibody detects endogenous levels of PRAM1 at Human |
| Formulation | Liquid in PBS containing 50% glycerol, 0.5% BSA and 0.02% sodium azide. |
| Storage | Store at -20°C. Avoid repeated freeze-thaw cycles. |
| Protein Name | PRAM1 |
| Gene Name | PRAMEF1 |
| Cellular localization | |
| Purification | The antibody was affinity-purified from rabbit antiserum by affinity-chromatography using epitope-specific immunogen. |
| Clonality | Polyclonal |
| Concentration | 1 mg/ml |
| Observed band | |
| Human Gene ID | 65121 |
| Human Swiss-Prot Number | O95521 |
| Alternative Names | |
| Background | <p>This gene is a member of the PRAME (preferentially expressed antigen of melanoma) gene family which is expressed in many cancers but may function in reproductive tissues during development.</p> <p>Alternative promoter usage generates two transcript variants, which encode different isoforms. [provided by RefSeq, Jun 2014],</p> |





ELK Biotechnology



Western blot analysis of lysates from A431 cells, primary antibody was diluted at 1:1000, 4° over night



+86-27-59760950

ELKbio@ELKbiotech.com

www.elkbiotech.com

23-2, No.388 Gaoxin 2nd Road, Wuhan East Lake Hi-tech Development Zone, Hubei, P.R.C.