

ADAM2 rabbit pAb

Cat No.:ES18460

For research use only

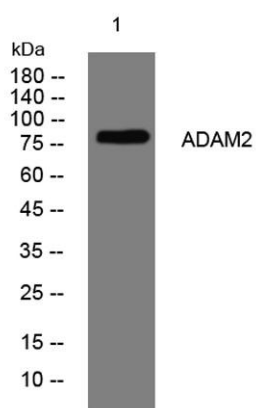
Overview

Product Name	ADAM2 rabbit pAb
Host species	Rabbit
Applications	WB
Species Cross-Reactivity	Human; Mouse;Rat
Recommended dilutions	WB 1: 500-2000
Immunogen	Synthesized peptide derived from human ADAM2 AA range: 109-159
Specificity	This antibody detects endogenous levels of ADAM2 at Human/Mouse/Rat
Formulation	Liquid in PBS containing 50% glycerol, 0.5% BSA and 0.02% sodium azide.
Storage	Store at -20°C. Avoid repeated freeze-thaw cycles.
Protein Name	ADAM2
Gene Name	ADAM2 FTNB
Cellular localization	Membrane; Single-pass type I membrane protein.
Purification	The antibody was affinity-purified from rabbit antiserum by affinity-chromatography using epitope-specific immunogen.
Clonality	Polyclonal
Concentration	1 mg/ml
Observed band	
Human Gene ID	2515
Human Swiss-Prot Number	Q99965
Alternative Names	
Background	This gene encodes a member of the ADAM (a disintegrin and metalloprotease domain) family. Members of this family are membrane-anchored proteins structurally related to snake venom disintegrins, and have been implicated in a variety of biological processes involving cell-cell and cell-matrix interactions, including fertilization, muscle development, and neurogenesis. The encoded protein is a subunit of an integral sperm





membrane glycoprotein called fertilin, which plays an important role in sperm-egg interactions. Alternative splicing results in multiple transcript variants encoding different isoforms. [provided by RefSeq, May 2013],



Western blot analysis of lysates from KB cells, primary antibody was diluted at 1:1000, 4° over night

