

FRPD2 rabbit pAb

Cat No.:ES16319

For research use only

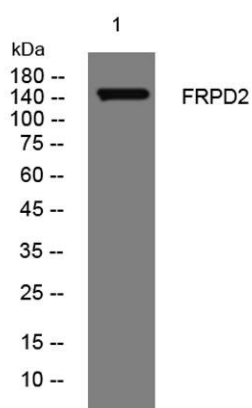
Overview

Product Name	FRPD2 rabbit pAb
Host species	Rabbit
Applications	WB
Species Cross-Reactivity	Human;Rat;Mouse;
Recommended dilutions	WB 1: 500-2000
Immunogen	Synthesized peptide derived from human FRPD2 AA range: 1161-1211
Specificity	This antibody detects endogenous levels of FRPD2 at Human
Formulation	Liquid in PBS containing 50% glycerol, 0.5% BSA and 0.02% sodium azide.
Storage	Store at -20°C. Avoid repeated freeze-thaw cycles.
Protein Name	FRPD2
Gene Name	FRMPD2 PDZD5C PDZK4 PDZK5C
Cellular localization	Cytoplasm . Basolateral cell membrane . Cell junction, tight junction . Colocalizes with CTNNB1, CDH1 and PKP4 at the basolateral membrane. Colocalizes with TJP1 at tight junctions. Its recruitment to cell-cell contacts requires CDH1.
Purification	The antibody was affinity-purified from rabbit antiserum by affinity-chromatography using epitope-specific immunogen.
Clonality	Polyclonal
Concentration	1 mg/ml
Observed band	
Human Gene ID	143162
Human Swiss-Prot Number	Q68DX3
Alternative Names	
Background	This gene encodes a peripheral membrane protein and is located in a region of chromosome 10q that contains a segmental duplication. This copy of the gene is full-length and is in the telomeric duplicated region. Two other more centromerically proximal





copies of the gene are partial and may represent pseudogenes. This full-length gene appears to function in the establishment and maintenance of cell polarization. The protein is recruited to cell-cell junctions in an E-cadherin-dependent manner, and is selectively localized at the basolateral membrane in polarized epithelial cells. Alternative splicing results in multiple transcript variants. [provided by RefSeq, Dec 2009],



Western blot analysis of lysates from THP-1 cells, primary antibody was diluted at 1:1000, 4° over night

