

# KIF5C rabbit pAb

Cat No.:ES15305

For research use only

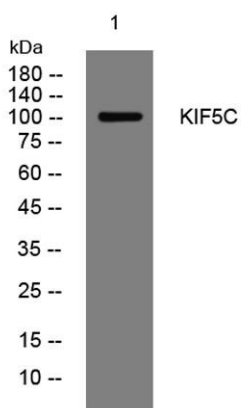
## Overview

Product Name	KIF5C rabbit pAb
Host species	Rabbit
Applications	WB
Species Cross-Reactivity	Human; Mouse;Rat
Recommended dilutions	WB 1:500-2000
Immunogen	Synthesized peptide derived from human KIF5C AA range: 119-169
Specificity	This antibody detects endogenous levels of KIF5C at Human/Mouse/Rat
Formulation	Liquid in PBS containing 50% glycerol, 0.5% BSA and 0.02% sodium azide.
Storage	Store at -20°C. Avoid repeated freeze-thaw cycles.
Protein Name	KIF5C
Gene Name	KIF5C KIAA0531 NKHC2
Cellular localization	Cytoplasm, cytoskeleton . Cell projection, dendrite . Abundant in distal regions of dendrites. .
Purification	The antibody was affinity-purified from rabbit antiserum by affinity-chromatography using epitope-specific immunogen.
Clonality	Polyclonal
Concentration	1 mg/ml
Observed band	105kD
Human Gene ID	3800
Human Swiss-Prot Number	O60282
Alternative Names	Kinesin heavy chain isoform 5C (Kinesin heavy chain neuron-specific 2)
Background	The protein encoded by this gene is a kinesin heavy chain subunit involved in the transport of cargo within the central nervous system. The encoded protein, which acts as a tetramer by associating with another heavy chain and two light chains, interacts with protein kinase CK2. Mutations in this gene have been associated with complex cortical dysplasia with





other brain malformations-2. Two transcript variants, one protein-coding and the other non-protein coding, have been found for this gene. [provided by RefSeq, Jul 2015],



Western blot analysis of lysates from U2OS cells, primary antibody was diluted at 1:1000, 4° over night

