

# FBX32 rabbit pAb

Cat No.:ES16504

For research use only

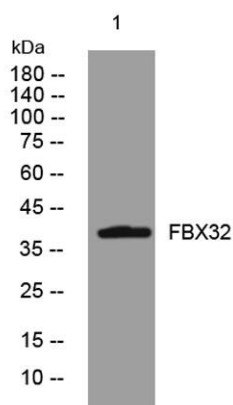
## Overview

Product Name	FBX32 rabbit pAb
Host species	Rabbit
Applications	WB
Species Cross-Reactivity	Human; Mouse;Rat
Recommended dilutions	WB 1:500-2000
Immunogen	Synthesized peptide derived from human FBX32 AA range: 217-267
Specificity	This antibody detects endogenous levels of FBX32 at Human/Mouse/Rat
Formulation	Liquid in PBS containing 50% glycerol, 0.5% BSA and 0.02% sodium azide.
Storage	Store at -20°C. Avoid repeated freeze-thaw cycles.
Protein Name	FBX32
Gene Name	FBXO32
Cellular localization	Cytoplasm . Nucleus . Shuttles between cytoplasm and the nucleus.
Purification	The antibody was affinity-purified from rabbit antiserum by affinity-chromatography using epitope-specific immunogen.
Clonality	Polyclonal
Concentration	1 mg/ml
Observed band	38kD
Human Gene ID	114907
Human Swiss-Prot Number	Q969P5
Alternative Names	F-box only protein 32 (Atrogin-1) (Muscle atrophy F-box protein) (MAFbx)
Background	This gene encodes a member of the F-box protein family which is characterized by an approximately 40 amino acid motif, the F-box. The F-box proteins constitute one of the four subunits of the ubiquitin protein ligase complex called SCFs (SKP1-cullin-F-box), which function in phosphorylation-dependent ubiquitination. The





F-box proteins are divided into 3 classes: Fbws containing WD-40 domains, Fbls containing leucine-rich repeats, and Fbxs containing either different protein-protein interaction modules or no recognizable motifs. The protein encoded by this gene belongs to the Fbxs class and contains an F-box domain. This protein is highly expressed during muscle atrophy, whereas mice deficient in this gene were found to be resistant to atrophy. This protein is thus a potential drug target for the treatment of muscle atrophy. Alternative splicing results in multiple transcript variants encoding different isoforms. [provided by RefSeq, Jun 2011],



Western blot analysis of lysates from HpeG2 cells, primary antibody was diluted at 1:1000, 4° over night

