

MYH-pan (Acetyl Lys505) rabbit pAb

Cat No.:ES20119

For research use only

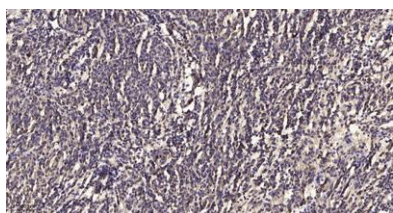
Overview

Product Name	MYH-pan (Acetyl Lys505) rabbit pAb
Host species	Rabbit
Applications	WB;ELISA;IHC
Species	Human;Mouse;Rat
Cross-Reactivity	
Recommended dilutions	WB 1:500-2000;IHC-p 1:50-300; ELISA 2000-20000
Immunogen	Synthesized peptide derived from human MYH-pan (Acetyl Lys505)
Specificity	This antibody detects endogenous levels of Human,Mouse,Rat MYH-pan (Acetyl Lys505)
Formulation	Liquid in PBS containing 50% glycerol, 0.5% BSA and 0.02% sodium azide.
Storage	Store at -20°C. Avoid repeated freeze-thaw cycles.
Protein Name	MYH-pan (Acetyl Lys505)
Gene Name	MYH1
Cellular localization	Cytoplasm, myofibril. Thick filaments of the myofibrils.
Purification	The antibody was affinity-purified from rabbit antiserum by affinity-chromatography using epitope-specific immunogen.
Clonality	Polyclonal
Concentration	1 mg/ml
Observed band	77kD
Human Gene ID	4619
Human Swiss-Prot Number	P12882/Q9UKX2/P11055/Q9Y623/P13533/P12883/P13535
Alternative Names	Myosin-1 (Myosin heavy chain 1;Myosin heavy chain 2x;MyHC-2x;Myosin heavy chain IIx/d;MyHC-IIx/d;Myosin heavy chain, skeletal muscle, adult 1)
Background	Myosin is a major contractile protein which converts chemical energy into mechanical energy through the hydrolysis of ATP. Myosin is a hexameric protein composed of a pair of myosin heavy chains (MYH) and two pairs of





nonidentical light chains. Myosin heavy chains are encoded by a multigene family. In mammals at least 10 different myosin heavy chain (MYH) isoforms have been described from striated, smooth, and nonmuscle cells. These isoforms show expression that is spatially and temporally regulated during development. [provided by RefSeq, Jul 2008],



Immunohistochemical analysis of paraffin-embedded human meningioma. 1, Antibody was diluted at 1:200(4° overnight). 2, Tris-EDTA,pH9.0 was used for antigen retrieval. 3,Secondary antibody was diluted at 1:200(room temperature, 45min).

