

KINH rabbit pAb

Cat No.:ES15303

For research use only

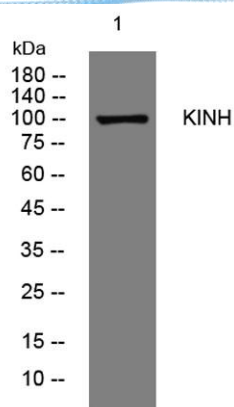
Overview

Product Name	KINH rabbit pAb
Host species	Rabbit
Applications	WB
Species Cross-Reactivity	Human; Mouse;Rat
Recommended dilutions	WB 1:500-2000
Immunogen	Synthesized peptide derived from human KINH AA range: 64-114
Specificity	This antibody detects endogenous levels of KINH at Human/Mouse/Rat
Formulation	Liquid in PBS containing 50% glycerol, 0.5% BSA and 0.02% sodium azide.
Storage	Store at -20°C. Avoid repeated freeze-thaw cycles.
Protein Name	KINH
Gene Name	KIF5B KNS KNS1
Cellular localization	Cytoplasm, cytoskeleton . Cytolytic granule membrane . Lysosome membrane ; Peripheral membrane protein ; Cytoplasmic side . Uniformly distributed between soma and neurites in hippocampal neurons. .
Purification	The antibody was affinity-purified from rabbit antiserum by affinity-chromatography using epitope-specific immunogen.
Clonality	Polyclonal
Concentration	1 mg/ml
Observed band	105kD
Human Gene ID	3799
Human Swiss-Prot Number	P33176
Alternative Names	Kinesin-1 heavy chain (Conventional kinesin heavy chain) (Ubiquitous kinesin heavy chain) (UKHC)
Background	





ELK Biotechnology



Western blot analysis of lysates from DU145 cells, primary antibody was diluted at 1:1000, 4° over night



+86-27-59760950

ELKbio@ELKbiotech.com

www.elkbiotech.com

23-2, No.388 Gaoxin 2nd Road, Wuhan East Lake Hi-tech Development Zone, Hubei, P.R.C.