

PGM5 rabbit pAb

Cat No.:ES14148

For research use only

Overview

Product Name	PGM5 rabbit pAb
Host species	Rabbit
Applications	WB
Species Cross-Reactivity	Human; Mouse
Recommended dilutions	WB 1:500-2000
Immunogen	Synthesized peptide derived from human PGM5 AA range: 357-407
Specificity	This antibody detects endogenous levels of PGM5 at Human/Mouse
Formulation	Liquid in PBS containing 50% glycerol, 0.5% BSA and 0.02% sodium azide.
Storage	Store at -20°C. Avoid repeated freeze-thaw cycles.
Protein Name	PGM5
Gene Name	PGM5 PGMRP
Cellular localization	Cell junction, adherens junction . Cytoplasm, cytoskeleton . Cell membrane, sarcolemma . Concentrated in focal contacts at the ends of actin bundles, and associated with actin filaments. .
Purification	The antibody was affinity-purified from rabbit antiserum by affinity-chromatography using epitope-specific immunogen.
Clonality	Polyclonal
Concentration	1 mg/ml
Observed band	60kD
Human Gene ID	5239
Human Swiss-Prot Number	Q15124
Alternative Names	Phosphoglucomutase-like protein 5 (Aciculin) (Phosphoglucomutase-related protein) (PGM-RP)
Background	Phosphoglucomutases (EC 5.2.2.2.), such as PGM5, are phosphotransferases involved in interconversion of glucose-1-phosphate and glucose-6-phosphate. PGM activity is essential in formation of carbohydrates from glucose-6-phosphate and in

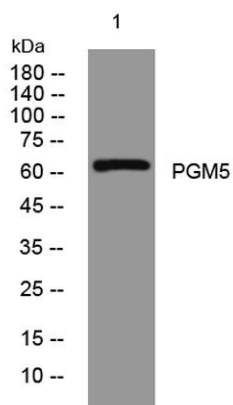




ELK Biotechnology

formation of glucose-6-phosphate from galactose and glycogen (Edwards et al., 1995 [PubMed 8586438]).[supplied by OMIM, Mar 2008],

Western blot analysis of lysates from U2OS cells, primary antibody was diluted at 1:1000, 4°over night



+86-27-59760950

ELKbio@ELKbiotech.com

www.elkbiotech.com

23-2, No.388 Gaoxin 2nd Road,Wuhan East Lake Hi-tech Development Zone, Hubei , P.R.C