

ROP1A rabbit pAb

Cat No.:ES13352

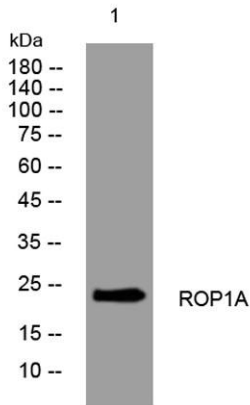
For research use only

Overview

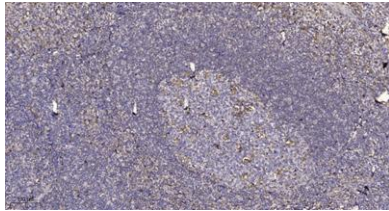
Product Name	ROP1A rabbit pAb
Host species	Rabbit
Applications	WB;IHC
Species Cross-Reactivity	Human;Rat;Mouse;
Recommended dilutions	WB 1:500-2000;IHC-p 1:50-300
Immunogen	Synthesized peptide derived from human ROP1A AA range: 85-135
Specificity	This antibody detects endogenous levels of ROP1A at Human
Formulation	Liquid in PBS containing 50% glycerol, 0.5% BSA and 0.02% sodium azide.
Storage	Store at -20°C. Avoid repeated freeze-thaw cycles.
Protein Name	ROP1A
Gene Name	ROPN1 ROPN1A
Cellular localization	Cell projection, cilium, flagellum . In the sperm tail, found in the principal piece and in the cytoplasmic droplet located at the distal end of the midpiece. Inner surface of the fibrous sheath. .
Purification	The antibody was affinity-purified from rabbit antiserum by affinity-chromatography using epitope-specific immunogen.
Clonality	Polyclonal
Concentration	1 mg/ml
Observed band	
Human Gene ID	54763
Human Swiss-Prot Number	Q9HAT0
Alternative Names	
Background	The protein encoded by this gene is found in the fibrous sheath of spermatazoa, where it interacts with rhophilin, a Rho GTPase binding protein. The encoded protein also can bind an A-kinase anchoring protein (AKAP110) and a calcium-binding tyrosine phosphorylation-regulated protein (CABYR).



This protein may be involved in sperm motility and has been shown to be a cancer-testis antigen in hematologic malignancies. Several transcript variants, some protein-coding and some non-protein coding, have been found for this gene. [provided by RefSeq, Dec 2015],



Western blot analysis of lysates from HeLa cells, primary antibody was diluted at 1:1000, 4° over night



Immunohistochemical analysis of paraffin-embedded human tonsil. 1, Antibody was diluted at 1:200(4° overnight). 2, Tris-EDTA, pH9.0 was used for antigen retrieval. 3, Secondary antibody was diluted at 1:200(room temperature, 45min).

