

SAMHD1 (phospho-Thr592) rabbit pAb

Cat No.:ES13204

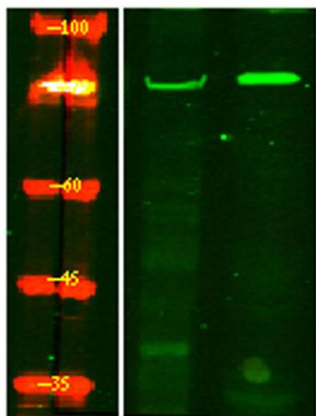
For research use only

Overview

Product Name	SAMHD1 (phospho-Thr592) rabbit pAb
Host species	Rabbit
Applications	WB
Species Cross-Reactivity	Human;Mouse;Rat
Recommended dilutions	WB 1:1000-2000
Immunogen	Synthesized phospho peptide around human SAMHD1 (Thr592)
Specificity	This antibody detects endogenous levels of Human Mouse Rat SAMHD1 (phospho-Thr592)
Formulation	Liquid in PBS containing 50% glycerol, 0.5% BSA and 0.02% sodium azide.
Storage	Store at -20°C. Avoid repeated freeze-thaw cycles.
Protein Name	SAMHD1 (Thr592)
Gene Name	SAMHD1 MOP5
Cellular localization	Nucleus . Chromosome . Localizes to sites of DNA double-strand breaks in response to DNA damage. .
Purification	The antibody was affinity-purified from rabbit antiserum by affinity-chromatography using epitope-specific immunogen.
Clonality	Polyclonal
Concentration	1 mg/ml
Observed band	72kD
Human Gene ID	25939
Human Swiss-Prot Number	Q9Y3Z3
Alternative Names	SAM domain and HD domain-containing protein 1 (EC 3.1.4.-) (Dendritic cell-derived IFNG-induced protein) (DCIP) (Monocyte protein 5) (MOP-5)
Background	SAM and HD domain containing deoxynucleoside triphosphate triphosphohydrolase 1(SAMHD1) Homo sapiens This gene may play a role in regulation of the innate immune response. The encoded protein is upregulated in response to viral infection and may be involved in mediation of tumor



necrosis factor-alpha proinflammatory responses. Mutations in this gene have been associated with Aicardi-Goutieres syndrome. [provided by RefSeq, Mar 2010],



Western Blot analysis of HELA treated or untreated by LPS lysis, using primary antibody at 1:1000 dilution. Secondary antibody(catalog#:RS23920) was diluted at 1:10000

