

# TM201 rabbit pAb

Cat No.:ES12664

For research use only

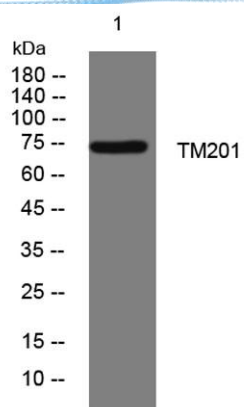
## Overview

Product Name	TM201 rabbit pAb
Host species	Rabbit
Applications	WB
Species Cross-Reactivity	Human; Mouse
Recommended dilutions	WB 1: 500-2000
Immunogen	Synthesized peptide derived from human TM201 AA range: 290-340
Specificity	This antibody detects endogenous levels of TM201 at Human/Mouse
Formulation	Liquid in PBS containing 50% glycerol, 0.5% BSA and 0.02% sodium azide.
Storage	Store at -20°C. Avoid repeated freeze-thaw cycles.
Protein Name	TM201
Gene Name	TMEM201 NET5 SAMP1
Cellular localization	[Isoform 2]: Nucleus inner membrane ; Multi-pass membrane protein . Cytoplasm, cytoskeleton, spindle pole . The C-terminal of isoform 2 is located on the nucleoplasmic side. During interphase, isoform 2 is distributed in the inner nuclear membrane in dist
Purification	The antibody was affinity-purified from rabbit antiserum by affinity-chromatography using epitope-specific immunogen.
Clonality	Polyclonal
Concentration	1 mg/ml
Observed band	
Human Gene ID	199953
Human Swiss-Prot Number	Q5SNT2
Alternative Names	
Background	





**ELK Biotechnology**



Western blot analysis of lysates from KB cells, primary antibody was diluted at 1:1000, 4° over night



+86-27-59760950

ELKbio@ELKbiotech.com

[www.elkbiotech.com](http://www.elkbiotech.com)

23-2, No.388 Gaoxin 2nd Road, Wuhan East Lake Hi-tech Development Zone, Hubei, P.R.C.