



# ITGAV (light chain, Cleaved-Asp891) rabbit pAb

Cat No.:ES20013

For research use only

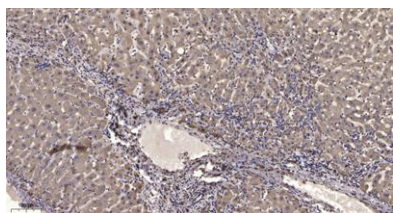
## Overview

Product Name	ITGAV (light chain, Cleaved-Asp891) rabbit pAb
Host species	Rabbit
Applications	WB;ELISA;IHC
Species Cross-Reactivity	Human;Mouse
Recommended dilutions	WB 1:500-2000;IHC-p 1:50-300; ELISA 2000-20000
Immunogen	Synthesized peptide derived from human ITGAV (light chain, Cleaved-Asp891)
Specificity	This antibody detects endogenous levels of Human,Mouse ITGAV (light chain, Cleaved-Asp891, protein was cleaved amino acid sequence between 890-891 )
Formulation	Liquid in PBS containing 50% glycerol, 0.5% BSA and 0.02% sodium azide.
Storage	Store at -20°C. Avoid repeated freeze-thaw cycles.
Protein Name	ITGAV (light chain, Cleaved-Asp891)
Gene Name	ITGAV MSK8 VNRA
Cellular localization	Cell membrane; Single-pass type I membrane protein. Cell junction, focal adhesion .
Purification	The antibody was affinity-purified from rabbit antiserum by affinity-chromatography using epitope-specific immunogen.
Clonality	Polyclonal
Concentration	1 mg/ml
Observed band	17 110kD
Human Gene ID	3685
Human Swiss-Prot Number	P06756
Alternative Names	Integrin alpha-V (Vitronectin receptor subunit alpha;CD antigen CD51) [Cleaved into: Integrin alpha-V heavy chain; Integrin alpha-V light chain] integrin subunit alpha V(ITGAV) Homo sapiens The product of this gene belongs to the integrin alpha chain family. Integrins are heterodimeric
Background	





integral membrane proteins composed of an alpha subunit and a beta subunit that function in cell surface adhesion and signaling. The encoded preproprotein is proteolytically processed to generate light and heavy chains that comprise the alpha V subunit. This subunit associates with beta 1, beta 3, beta 5, beta 6 and beta 8 subunits. The heterodimer consisting of alpha V and beta 3 subunits is also known as the vitronectin receptor. This integrin may regulate angiogenesis and cancer progression. Alternative splicing results in multiple transcript variants. Note that the integrin alpha 5 and integrin alpha V subunits are encoded by distinct genes. [provided by RefSeq, Oct 2015],



Immunohistochemical analysis of paraffin-embedded human liver cancer. 1, Antibody was diluted at 1:200(4° overnight). 2, Tris-EDTA,pH9.0 was used for antigen retrieval. 3,Secondary antibody was diluted at 1:200(room temperature, 45min).

