

AMRP rabbit pAb

Cat No.:ES18366

For research use only

Overview

Product Name	AMRP rabbit pAb
Host species	Rabbit
Applications	WB
Species Cross-Reactivity	Human; Mouse;Rat
Recommended dilutions	WB 1: 500-2000
Immunogen	Synthesized peptide derived from human AMRP AA range: 277-327
Specificity	This antibody detects endogenous levels of AMRP at Human/Mouse/Rat
Formulation	Liquid in PBS containing 50% glycerol, 0.5% BSA and 0.02% sodium azide.
Storage	Store at -20°C. Avoid repeated freeze-thaw cycles.
Protein Name	AMRP
Gene Name	LRPAP1 A2MRAP
Cellular localization	Rough endoplasmic reticulum lumen . Endoplasmic reticulum-Golgi intermediate compartment lumen . Golgi apparatus, cis-Golgi network . Golgi apparatus lumen . Endosome lumen . Cell surface . May be associated with receptors at the cell surface. .
Purification	The antibody was affinity-purified from rabbit antiserum by affinity-chromatography using epitope-specific immunogen.
Clonality	Polyclonal
Concentration	1 mg/ml
Observed band	
Human Gene ID	4043
Human Swiss-Prot Number	P30533
Alternative Names	
Background	This gene encodes a protein that interacts with the low density lipoprotein (LDL) receptor-related protein and facilitates its proper folding and localization by preventing the binding of ligands. Mutations in this gene have been identified in

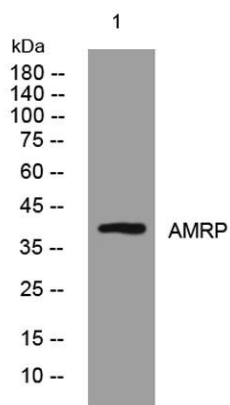




ELK Biotechnology

individuals with myopia 23. Alternative splicing results in multiple transcript variants. [provided by RefSeq, Dec 2013],

Western blot analysis of lysates from Hela cells, primary antibody was diluted at 1:1000, 4°over night



+86-27-59760950

ELKbio@ELKbiotech.com

www.elkbiotech.com

23-2, No.388 Gaoxin 2nd Road,Wuhan East Lake Hi-tech Development Zone, Hubei , P.R.C