

# UBP25 rabbit pAb

Cat No.:ES12444

For research use only

## Overview

Product Name	UBP25 rabbit pAb
Host species	Rabbit
Applications	WB
Species Cross-Reactivity	Human; Mouse
Recommended dilutions	WB 1: 500-2000
Immunogen	Synthesized peptide derived from human UB25 AA range: 883-933
Specificity	This antibody detects endogenous levels of UB25 at Human/Mouse
Formulation	Liquid in PBS containing 50% glycerol, 0.5% BSA and 0.02% sodium azide.
Storage	Store at -20°C. Avoid repeated freeze-thaw cycles.
Protein Name	UB25
Gene Name	USP25 USP21
Cellular localization	Cytoplasm .; [Isoform USP25m]: Cytoplasm . Nucleus . Some transient punctuate nuclear location in myotubes during myocyte development. .
Purification	The antibody was affinity-purified from rabbit antiserum by affinity-chromatography using epitope-specific immunogen.
Clonality	Polyclonal
Concentration	1 mg/ml
Observed band	
Human Gene ID	29761
Human Swiss-Prot Number	Q9UHP3
Alternative Names	
Background	Ubiquitin (MIM 191339) is a highly conserved 76-amino acid protein involved in regulation of intracellular protein breakdown, cell cycle regulation, and stress response. Ubiquitin is released from degraded proteins by disassembly of the polyubiquitin chains, which is mediated by ubiquitin-specific proteases (USPs), such as USP25

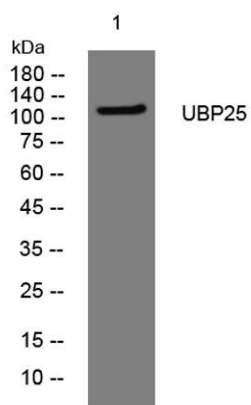




**ELK Biotechnology**

(Valero et al., 1999 [PubMed 10644437]).[supplied  
by OMIM, Mar 2008],

Western blot analysis of lysates from THP-1 cells, primary  
antibody was diluted at 1:1000, 4°over night



+86-27-59760950

ELKbio@ELKbiotech.com

[www.elkbiotech.com](http://www.elkbiotech.com)

23-2, No.388 Gaoxin 2nd Road,Wuhan East Lake Hi-tech Development Zone, Hubei , P.R.C