

CSMD2 rabbit pAb

Cat No.:ES17204

For research use only

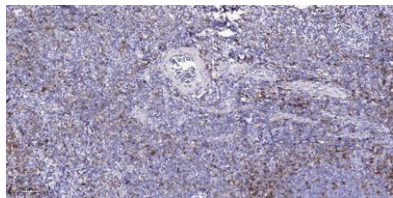
Overview

Product Name	CSMD2 rabbit pAb
Host species	Rabbit
Applications	IHC;IF
Species Cross-Reactivity	Human;Rat;Mouse;
Recommended dilutions	IHC-p 1: 50-200
Immunogen	Synthesized peptide derived from human CSMD2 AA range: 2638-2688
Specificity	This antibody detects endogenous levels of CSMD2 at Human
Formulation	Liquid in PBS containing 50% glycerol, 0.5% BSA and 0.02% sodium azide.
Storage	Store at -20°C. Avoid repeated freeze-thaw cycles.
Protein Name	CSMD2
Gene Name	CSMD2 KIAA1884
Cellular localization	Cell membrane ; Single-pass membrane protein .
Purification	The antibody was affinity-purified from rabbit antiserum by affinity-chromatography using epitope-specific immunogen.
Clonality	Polyclonal
Concentration	1 mg/ml
Observed band	
Human Gene ID	114784
Human Swiss-Prot Number	Q7Z408
Alternative Names	
Background	





ELK Biotechnology



Immunohistochemical analysis of paraffin-embedded human tonsil. 1, Antibody was diluted at 1:200(4° overnight). 2, Tris-EDTA,pH9.0 was used for antigen retrieval. 3,Secondary antibody was diluted at 1:200(room temperature, 45min).



+86-27-59760950

ELKbio@ELKbiotech.com

www.elkbiotech.com

23-2, No.388 Gaoxin 2nd Road,Wuhan East Lake Hi-tech Development Zone, Hubei , P.R.C