

# RBM19 rabbit pAb

Cat No.:ES13449

For research use only

## Overview

Product Name	RBM19 rabbit pAb
Host species	Rabbit
Applications	WB
Species Cross-Reactivity	Human; Mouse
Recommended dilutions	WB 1:500-2000
Immunogen	Synthesized peptide derived from human RBM19 AA range: 276-326
Specificity	This antibody detects endogenous levels of RBM19 at Human/Mouse
Formulation	Liquid in PBS containing 50% glycerol, 0.5% BSA and 0.02% sodium azide.
Storage	Store at -20°C. Avoid repeated freeze-thaw cycles.
Protein Name	RBM19
Gene Name	RBM19 KIAA0682
Cellular localization	Nucleus, nucleolus . Nucleus, nucleoplasm . Cytoplasm . Chromosome . In discrete foci distributed throughout the cytoplasm and nucleoplasm during the 4 to 8 cell stages and the morula stage, but not in the periphery of the nucleolar precursor body (NPB).
Purification	The antibody was affinity-purified from rabbit antiserum by affinity-chromatography using epitope-specific immunogen.
Clonality	Polyclonal
Concentration	1 mg/ml
Observed band	105kD
Human Gene ID	9904
Human Swiss-Prot Number	Q9Y4C8
Alternative Names	Probable RNA-binding protein 19 (RNA-binding motif protein 19)
Background	This gene encodes a nucleolar protein that contains six RNA-binding motifs. The encoded protein may be involved in regulating ribosome biogenesis. Multiple

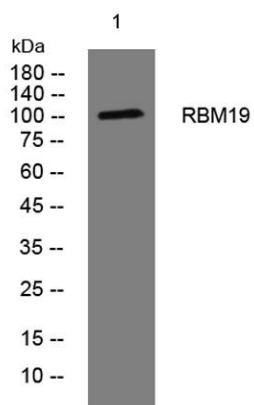




**ELK Biotechnology**

alternatively spliced variants, encoding the same protein, have been identified.[provided by RefSeq, Apr 2009],

Western blot analysis of lysates from AD293 cells, primary antibody was diluted at 1:1000, 4°over night



+86-27-59760950

ELKbio@ELKbiotech.com

[www.elkbiotech.com](http://www.elkbiotech.com)

23-2, No.388 Gaoxin 2nd Road,Wuhan East Lake Hi-tech Development Zone, Hubei , P.R.C