

eIF5A/eIF5A2 rabbit pAb

Cat No.:ES16765

For research use only

Overview

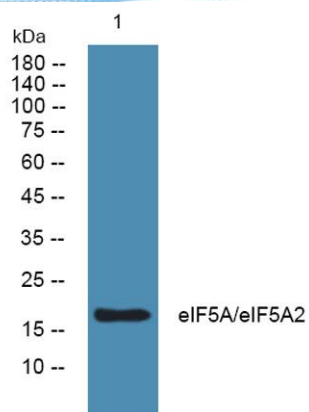
Product Name	eIF5A/eIF5A2 rabbit pAb
Host species	Rabbit
Applications	WB; ELISA
Species Cross-Reactivity	Human; Mouse; Rat
Recommended dilutions	WB 1:500-2000, ELISA(peptide)1:5000-20000
Immunogen	Synthesized peptide derived from human eIF5A/eIF5A2
Specificity	This antibody detects endogenous levels of human eIF5A/eIF5A2
Formulation	Liquid in PBS containing 50% glycerol, 0.5% BSA and 0.02% sodium azide.
Storage	Store at -20°C. Avoid repeated freeze-thaw cycles.
Protein Name	eIF5A/eIF5A2
Gene Name	EIF5A
Cellular localization	Cytoplasm . Nucleus . Endoplasmic reticulum membrane ; Peripheral membrane protein ; Cytoplasmic side . Hypusine modification promotes the nuclear export and cytoplasmic localization and there was a dynamic shift in the localization from predominantly cyt
Purification	The antibody was affinity-purified from rabbit antiserum by affinity-chromatography using epitope-specific immunogen.
Clonality	Polyclonal
Concentration	1 mg/ml
Observed band	17kD
Human Gene ID	1984
Human Swiss-Prot Number	P63241/Q9GZV4
Alternative Names	Eukaryotic translation initiation factor 5A-1 (eIF-5A-1;eIF-5A1;Eukaryotic initiation factor 5A isoform 1;eIF-5A;Rev-binding factor;eIF-4D)

Background





ELK Biotechnology



Western blot analysis of lysates from PC12 cells, primary antibody was diluted at 1:1000, 4° over night



+86-27-59760950

ELKbio@ELKbiotech.com

www.elkbiotech.com

23-2, No.388 Gaoxin 2nd Road, Wuhan East Lake Hi-tech Development Zone, Hubei, P.R.C.