

CYBR1 rabbit pAb

Cat No.:ES17163

For research use only

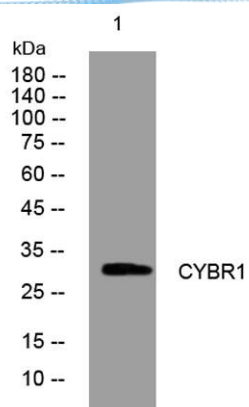
Overview

Product Name	CYBR1 rabbit pAb
Host species	Rabbit
Applications	WB
Species Cross-Reactivity	Human; Mouse;Rat
Recommended dilutions	WB 1: 500-2000
Immunogen	Synthesized peptide derived from human CYBR1 AA range: 41-91
Specificity	This antibody detects endogenous levels of CYBR1 at Human/Mouse/Rat
Formulation	Liquid in PBS containing 50% glycerol, 0.5% BSA and 0.02% sodium azide.
Storage	Store at -20°C. Avoid repeated freeze-thaw cycles.
Protein Name	CYBR1
Gene Name	CYBRD1 DCYTB FRRS3
Cellular localization	Cell membrane ; Multi-pass membrane protein . Apical cell membrane ; Multi-pass membrane protein . Localized at the brush border of duodenal cells. .
Purification	The antibody was affinity-purified from rabbit antiserum by affinity-chromatography using epitope-specific immunogen.
Clonality	Polyclonal
Concentration	1 mg/ml
Observed band	
Human Gene ID	79901
Human Swiss-Prot Number	Q53TN4
Alternative Names	
Background	This gene is a member of the cytochrome b(561) family that encodes an iron-regulated protein. It highly expressed in the duodenal brush border membrane. It has ferric reductase activity and is believed to play a physiological role in dietary iron absorption. [provided by RefSeq, Jul 2008],





ELK Biotechnology



Western blot analysis of lysates from 3T3 cells, primary antibody was diluted at 1:1000, 4° over night



+86-27-59760950

ELKbio@ELKbiotech.com

www.elkbiotech.com

23-2, No.388 Gaoxin 2nd Road, Wuhan East Lake Hi-tech Development Zone, Hubei, P.R.C.