

# MS4A7 rabbit pAb

Cat No.:ES14706

For research use only

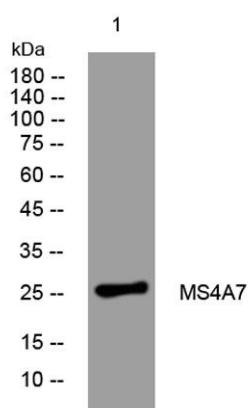
## Overview

Product Name	MS4A7 rabbit pAb
Host species	Rabbit
Applications	WB
Species Cross-Reactivity	Human;Rat;Mouse;
Recommended dilutions	WB 1: 500-2000
Immunogen	Synthesized peptide derived from human MS4A7 AA range: 3-53
Specificity	This antibody detects endogenous levels of MS4A7 at Human
Formulation	Liquid in PBS containing 50% glycerol, 0.5% BSA and 0.02% sodium azide.
Storage	Store at -20°C. Avoid repeated freeze-thaw cycles.
Protein Name	MS4A7
Gene Name	MS4A7 4SPAN2 CD20L4 CFFM4
Cellular localization	Membrane; Multi-pass membrane protein.
Purification	The antibody was affinity-purified from rabbit antiserum by affinity-chromatography using epitope-specific immunogen.
Clonality	Polyclonal
Concentration	1 mg/ml
Observed band	
Human Gene ID	58475
Human Swiss-Prot Number	Q9GZW8
Alternative Names	
Background	This gene encodes a member of the membrane-spanning 4A gene family, members of which are characterized by common structural features and similar intron/exon splice boundaries and display unique expression patterns in hematopoietic cells and nonlymphoid tissues. This family member is associated with mature cellular function in the monocytic lineage, and it may be a component of a receptor complex involved in signal





transduction. This gene is localized to 11q12, in a cluster of other family members. At least four alternatively spliced transcript variants encoding two distinct isoforms have been observed. [provided by RefSeq, Jul 2008],



Western blot analysis of lysates from HeLa cells, primary antibody was diluted at 1:1000, 4° over night

