

PSM rabbit pAb

Cat No.:ES20295

For research use only

Overview

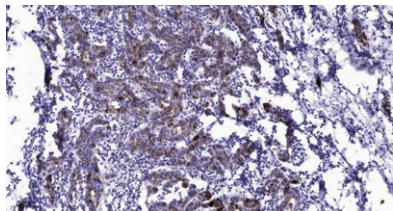
Product Name	PSM rabbit pAb
Host species	Rabbit
Applications	WB;IHC
Species Cross-Reactivity	Human;Rat;Mouse;
Recommended dilutions	WB 1:500-2000;IHC-p 1:50-300
Immunogen	Synthesized peptide derived from human PSM AA range: 571-620
Specificity	This antibody detects endogenous levels of Human PSM
Formulation	Liquid in PBS containing 50% glycerol, 0.5% BSA and 0.02% sodium azide.
Storage	Store at -20°C. Avoid repeated freeze-thaw cycles.
Protein Name	PSM
Gene Name	FOLH1 FOLH NAALAD1 PSM PSMA GIG27
Cellular localization	Cell membrane ; Single-pass type II membrane protein .; [Isoform PSMA']: Cytoplasm .
Purification	The antibody was affinity-purified from rabbit antiserum by affinity-chromatography using epitope-specific immunogen.
Clonality	Polyclonal
Concentration	1 mg/ml
Observed band	
Human Gene ID	2346
Human Swiss-Prot Number	Q04609
Alternative Names	Glutamate carboxypeptidase 2 (EC 3.4.17.21;Cell growth-inhibiting gene 27 protein;Folate hydrolase 1;Folypoly-gamma-glutamate carboxypeptidase;FGCP;Glutamate carboxypeptidase II;GCPII;Membrane glutamate carboxypeptidase;mGCP;N-acetylated-alpha-linked aci

Background





ELK Biotechnology



Immunohistochemical analysis of paraffin-embedded human Breast cancer. 1, Antibody was diluted at 1:200(4° overnight). 2, Tris-EDTA,pH9.0 was used for antigen retrieval. 3,Secondary antibody was diluted at 1:200(room temperature, 45min).



+86-27-59760950

ELKbio@ELKbiotech.com

www.elkbiotech.com

23-2, No.388 Gaoxin 2nd Road,Wuhan East Lake Hi-tech Development Zone, Hubei , P.R.C