

EPHA1 (Phospho-Tyr605) rabbit pAb

Cat No.:ES16733

For research use only

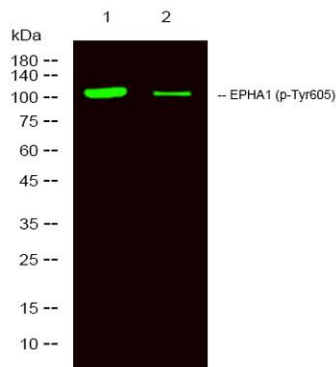
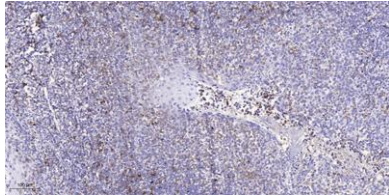
Overview

Product Name	EPHA1 (Phospho-Tyr605) rabbit pAb
Host species	Rabbit
Applications	IHC;IF;WB
Species Cross-Reactivity	Human; Mouse
Recommended dilutions	IHC-p 1:50-200, WB 1:500-2000
Immunogen	Synthesized peptide derived from human EPHA1 (Phospho-Tyr605)
Specificity	This antibody detects endogenous phospho levels of EPHA1 (Phospho-Tyr605) at Human:Y605, Mouse:Y606
Formulation	Liquid in PBS containing 50% glycerol, 0.5% BSA and 0.02% sodium azide.
Storage	Store at -20°C. Avoid repeated freeze-thaw cycles.
Protein Name	EPHA1 (Phospho-Tyr605)
Gene Name	EPHA1 EPH EPHT EPHT1
Cellular localization	Cell membrane ; Single-pass type I membrane protein .
Purification	The antibody was affinity-purified from rabbit antiserum by affinity-chromatography using epitope-specific immunogen.
Clonality	Polyclonal
Concentration	1 mg/ml
Observed band	108kD
Human Gene ID	2041
Human Swiss-Prot Number	P21709
Alternative Names	Ephrin type-A receptor 1 (hEpha1;EC 2.7.10.1;EPH tyrosine kinase;EPH tyrosine kinase 1;Erythropoietin-producing hepatoma receptor;Tyrosine-protein kinase receptor EPH)
Background	This gene belongs to the ephrin receptor subfamily of the protein-tyrosine kinase family. EPH and EPH-related receptors have been implicated in mediating developmental events, particularly in the



nervous system. Receptors in the EPH subfamily typically have a single kinase domain and an extracellular region containing a Cys-rich domain and 2 fibronectin type III repeats. The ephrin receptors are divided into 2 groups based on the similarity of their extracellular domain sequences and their affinities for binding ephrin-A and ephrin-B ligands. This gene is expressed in some human cancer cell lines and has been implicated in carcinogenesis. [provided by RefSeq, Jul 2008],

Immunohistochemical analysis of paraffin-embedded human tonsil. 1, Antibody was diluted at 1:200(4° overnight). 2, Tris-EDTA,pH9.0 was used for antigen retrieval. 3,Secondary antibody was diluted at 1:200(room temperature, 45min).



Western Blot analysis of 1 HeLa treated with LPS, 2 HeLa,using primary antibody at 1:1000 dilution. Secondary antibody(catalog#:RS23920) was diluted at 1:10000

