

WDR82 rabbit pAb

Cat No.:ES12309

For research use only

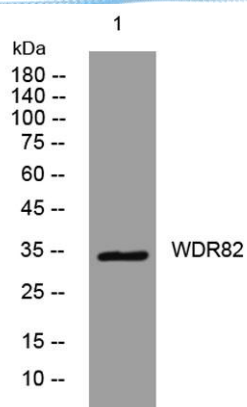
Overview

Product Name	WDR82 rabbit pAb
Host species	Rabbit
Applications	WB
Species Cross-Reactivity	Human; Mouse
Recommended dilutions	WB 1: 500-2000
Immunogen	Synthesized peptide derived from human WDR82 AA range: 219-269
Specificity	This antibody detects endogenous levels of WDR82 at Human/Mouse
Formulation	Liquid in PBS containing 50% glycerol, 0.5% BSA and 0.02% sodium azide.
Storage	Store at -20°C. Avoid repeated freeze-thaw cycles.
Protein Name	WDR82
Gene Name	WDR82 WDR82A UNQ9342/PRO34047
Cellular localization	Nucleus . Chromosome . Associates with chromatin (PubMed:20516061). Recruited at sites of high RNA polymerase II occupancy (By similarity). .
Purification	The antibody was affinity-purified from rabbit antiserum by affinity-chromatography using epitope-specific immunogen.
Clonality	Polyclonal
Concentration	1 mg/ml
Observed band	
Human Gene ID	80335
Human Swiss-Prot Number	Q6UXN9
Alternative Names	
Background	TMEM113 (WDR82) is a component of the mammalian SET1A (MIM 611052)/SET1B (MIM 611055) histone H3-Lys4 methyltransferase complexes (Lee and Skalnik, 2005 [PubMed 16253997]; Lee et al., 2007 [PubMed 17355966]).[supplied by OMIM, Jul 2010],





ELK Biotechnology



Western blot analysis of lysates from Jarkat cells, primary antibody was diluted at 1:1000, 4° over night



+86-27-59760950

ELKbio@ELKbiotech.com

www.elkbiotech.com

23-2, No.388 Gaoxin 2nd Road, Wuhan East Lake Hi-tech Development Zone, Hubei, P.R.C.