

# DDR1 (Phospho Tyr796) rabbit pAb

Cat No.:ES20188

For research use only

## Overview

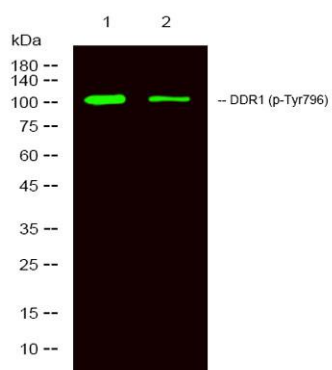
|                          |   |
|--------------------------|---|
| Product Name             | DDR1 (Phospho Tyr796) rabbit pAb  |
| Host species             | Rabbit  |
| Applications             | WB; ELISA   |
| Species Cross-Reactivity | Human;Mouse;Rat   |
| Recommended dilutions    | WB 1:1000-2000 ELISA 1:5000-20000   |
| Immunogen                | Synthesized peptide derived from human DDR1 (Phospho Tyr796)  |
| Specificity              | This antibody detects endogenous levels of Human,Mouse,Rat DDR1 (Phospho Tyr796)  |
| Formulation              | Liquid in PBS containing 50% glycerol, 0.5% BSA and 0.02% sodium azide.   |
| Storage                  | Store at -20°C. Avoid repeated freeze-thaw cycles.  |
| Protein Name             | DDR1 (Phospho Tyr796)   |
| Gene Name                | DDR1 CAK EDDR1 NEP NTRK4 PTK3A RTK6 TRKE  |
| Cellular localization    | [Isoform 1]: Cell membrane; Single-pass type I membrane protein.; [Isoform 2]: Cell membrane; Single-pass type I membrane protein.; [Isoform 3]: Secreted .; [Isoform 4]: Cell membrane; Single-pass type I membrane protein.                                   |
| Purification             | The antibody was affinity-purified from rabbit antiserum by affinity-chromatography using epitope-specific immunogen.   |
| Clonality                | Polyclonal  |
| Concentration            | 1 mg/ml   |
| Observed band            | 100kD   |
| Human Gene ID            | 780   |
| Human Swiss-Prot Number  | Q08345  |
| Alternative Names        | Epithelial discoidin domain-containing receptor 1 (Epithelial discoidin domain receptor 1;EC 2.7.10.1;CD167 antigen-like family member A;Cell adhesion kinase;Discoidin receptor tyrosine kinase;HGK2;Mammary carcinoma kinase 10;MCK-10;Protein-tyrosine kinas |





## Background

catalytic activity:ATP + a [protein]-L-tyrosine = ADP + a [protein]-L-tyrosine phosphate.,domain:The Gly/Pro-rich domains may be required for an unusual geometry of interaction with ligand or substrates.,function:May be involved in cell-cell interactions and recognition.,similarity:Belongs to the protein kinase superfamily. Tyr protein kinase family. Insulin receptor subfamily.,similarity:Contains 1 F5/8 type C domain.,similarity:Contains 1 protein kinase domain.,tissue specificity:Expressed at low levels in most adult tissues and is highest in the brain and lung. Abundant in breast carcinoma cell lines.,



Western Blot analysis of 1 HeLa, 2 treated with LPS 100ng/mL 20min, using primary antibody at 1:1000 dilution. Secondary antibody(catalog#:RS23920) was diluted at 1:10000

