



## VIP1 rabbit pAb

Cat No.:ES12355

For research use only

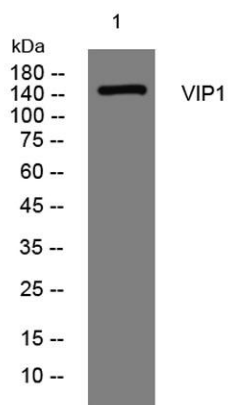
### Overview

Product Name	VIP1 rabbit pAb
Host species	Rabbit
Applications	WB
Species Cross-Reactivity	Human; Mouse;Rat
Recommended dilutions	WB 1: 500-2000
Immunogen	Synthesized peptide derived from human VIP1 AA range: 1350-1400
Specificity	This antibody detects endogenous levels of VIP1 at Human/Mouse/Rat
Formulation	Liquid in PBS containing 50% glycerol, 0.5% BSA and 0.02% sodium azide.
Storage	Store at -20°C. Avoid repeated freeze-thaw cycles.
Protein Name	VIP1
Gene Name	PPIP5K1 HISPPD2A IP6K IPS1 KIAA0377 VIP1
Cellular localization	Cytoplasm, cytosol . Cell membrane . Relocalizes to the plasma membrane upon activation of the PtdIns 3-kinase pathway. .
Purification	The antibody was affinity-purified from rabbit antiserum by affinity-chromatography using epitope-specific immunogen.
Clonality	Polyclonal
Concentration	1 mg/ml
Observed band	
Human Gene ID	9677
Human Swiss-Prot Number	Q6PFW1
Alternative Names	
Background	This gene encodes a dual functional inositol kinase. The encoded enzyme converts inositol hexakisphosphate to diphosphoinositol pentakisphosphate and diphosphoinositol pentakisphosphate to bis-diphosphoinositol tetrakisphosphate. This protein may be important for intracellular signaling pathways. Alternate





splicing results in multiple transcript variants. A pseudogene of this gene is found on chromosome 15.[provided by RefSeq, Jun 2010],



Western blot analysis of lysates from HCT116 cells,  
primary antibody was diluted at 1:1000, 4°over night

