



ITGA8 (heavy chain, Cleaved-Arg906) rabbit pAb

Cat No.:ES20008

For research use only

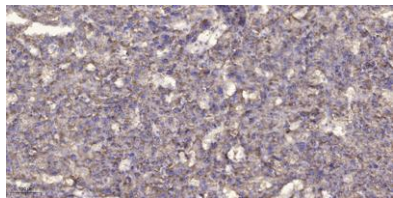
Overview

Product Name	ITGA8 (heavy chain, Cleaved-Arg906) rabbit pAb
Host species	Rabbit
Applications	WB;IHC
Species Cross-Reactivity	Human;Mouse;Rat
Recommended dilutions	WB 1:500-2000;IHC-p 1:50-300
Immunogen	Synthesized peptide derived from human ITGA8 (heavy chain, Cleaved-Arg906)
Specificity	This antibody detects endogenous levels of Human,Mouse,Rat ITGA8 (heavy chain, Cleaved-Arg906, protein was cleaved amino acid sequence between 906-907)
Formulation	Liquid in PBS containing 50% glycerol, 0.5% BSA and 0.02% sodium azide.
Storage	Store at -20°C. Avoid repeated freeze-thaw cycles.
Protein Name	ITGA8 (heavy chain, Cleaved-Arg906)
Gene Name	ITGA8
Cellular localization	Membrane ; Single-pass type I membrane protein . Cell membrane .
Purification	The antibody was affinity-purified from rabbit antiserum by affinity-chromatography using epitope-specific immunogen.
Clonality	Polyclonal
Concentration	1 mg/ml
Observed band	95 115kD
Human Gene ID	8516
Human Swiss-Prot Number	P53708
Alternative Names	Integrin alpha-8 [Cleaved into: Integrin alpha-8 heavy chain; Integrin alpha-8 light chain]
Background	





ELK Biotechnology



Immunohistochemical analysis of paraffin-embedded human liver cancer. 1, Antibody was diluted at 1:200(4° overnight). 2, Tris-EDTA,pH9.0 was used for antigen retrieval. 3,Secondary antibody was diluted at 1:200(room temperature, 45min).



+86-27-59760950

ELKbio@ELKbiotech.com

www.elkbiotech.com

23-2, No.388 Gaoxin 2nd Road,Wuhan East Lake Hi-tech Development Zone, Hubei , P.R.C