

# ZN626 rabbit pAb

Cat No.:ES12125

For research use only

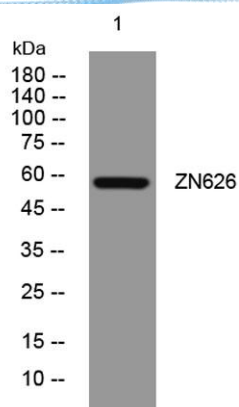
## Overview

Product Name	ZN626 rabbit pAb
Host species	Rabbit
Applications	WB
Species Cross-Reactivity	Human;Rat;Mouse;
Recommended dilutions	WB 1: 500-2000
Immunogen	Synthesized peptide derived from human ZN626 AA range: 398-448
Specificity	This antibody detects endogenous levels of ZN626 at Human
Formulation	Liquid in PBS containing 50% glycerol, 0.5% BSA and 0.02% sodium azide.
Storage	Store at -20°C. Avoid repeated freeze-thaw cycles.
Protein Name	ZN626
Gene Name	ZNF626
Cellular localization	Nucleus .
Purification	The antibody was affinity-purified from rabbit antiserum by affinity-chromatography using epitope-specific immunogen.
Clonality	Polyclonal
Concentration	1 mg/ml
Observed band	
Human Gene ID	199777
Human Swiss-Prot Number	Q68DY1
Alternative Names	
Background	





**ELK Biotechnology**



Western blot analysis of lysates from K562 cells, primary antibody was diluted at 1:1000, 4° over night



+86-27-59760950

ELKbio@ELKbiotech.com

[www.elkbiotech.com](http://www.elkbiotech.com)

23-2, No.388 Gaoxin 2nd Road, Wuhan East Lake Hi-tech Development Zone, Hubei, P.R.C.