

MPPE1 rabbit pAb

Cat No.:ES14717

For research use only

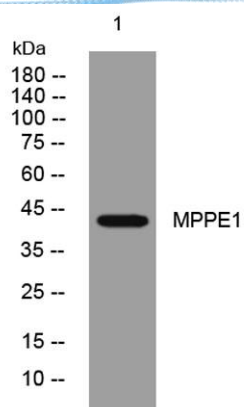
Overview

Product Name	MPPE1 rabbit pAb
Host species	Rabbit
Applications	WB
Species Cross-Reactivity	Human; Mouse;Rat
Recommended dilutions	WB 1: 500-2000
Immunogen	Synthesized peptide derived from human MPPE1 AA range: 89-139
Specificity	This antibody detects endogenous levels of MPPE1 at Human/Mouse/Rat
Formulation	Liquid in PBS containing 50% glycerol, 0.5% BSA and 0.02% sodium azide.
Storage	Store at -20°C. Avoid repeated freeze-thaw cycles.
Protein Name	MPPE1
Gene Name	MPPE1 PGAP5 PP579
Cellular localization	Endoplasmic reticulum-Golgi intermediate compartment membrane ; Multi-pass membrane protein . Golgi apparatus, cis-Golgi network membrane ; Multi-pass membrane protein . Also localizes to endoplasmic reticulum exit site.
Purification	The antibody was affinity-purified from rabbit antiserum by affinity-chromatography using epitope-specific immunogen.
Clonality	Polyclonal
Concentration	1 mg/ml
Observed band	
Human Gene ID	65258
Human Swiss-Prot Number	Q53F39
Alternative Names	
Background	





ELK Biotechnology



Western blot analysis of lysates from CACO2 cells, primary antibody was diluted at 1:1000, 4° over night



+86-27-59760950

ELKbio@ELKbiotech.com

www.elkbiotech.com

23-2, No.388 Gaoxin 2nd Road, Wuhan East Lake Hi-tech Development Zone, Hubei, P.R.C.