

# E-Tag rabbit pAb

Cat No.:ES16661

For research use only

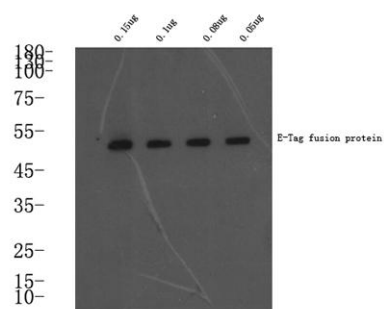
## Overview

Product Name	E-Tag rabbit pAb
Host species	Rabbit
Applications	WB; ELISA
Species Cross-Reactivity	Species independent
Recommended dilutions	WB 1:1000-5000, ELISA(peptide)1:5000-20000
Immunogen	Synthetic peptide: GAPVPYPDPLEPR conjugated to KLH.
Specificity	Rabbit polyclonal to E tag
Formulation	Liquid in PBS containing 50% glycerol, 0.5% BSA and 0.02% sodium azide.
Storage	Store at -20°C. Avoid repeated freeze-thaw cycles.
Protein Name	E Tag
Gene Name	E Tag
Cellular localization	
Purification	The antibody was affinity-purified from rabbit antiserum by affinity-chromatography using epitope-specific immunogen.
Clonality	Polyclonal
Concentration	1 mg/ml
Observed band	
Human Gene ID	
Human Swiss-Prot Number	
Alternative Names	E epitope tag antibody GAPVPYPDPLEPR epitope tag antibody GAPVPYPDPLEPR tag antibody
Background	





**ELK Biotechnology**



Western blot analysis of E-Tag fusion protein at 0.05-0.15ug, 4° over night, secondary antibody(cat: RS0002) was diluted at 1:10000, 37° 1hour.



+86-27-59760950

ELKbio@ELKbiotech.com

[www.elkbiotech.com](http://www.elkbiotech.com)

23-2, No.388 Gaoxin 2nd Road,Wuhan East Lake Hi-tech Development Zone, Hubei , P.R.C