

DCD2C rabbit pAb

Cat No.:ES16996

For research use only

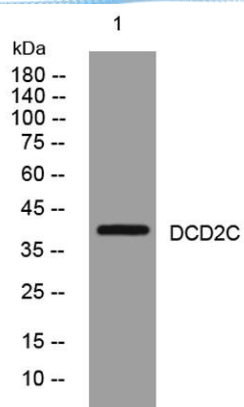
Overview

Product Name	DCD2C rabbit pAb
Host species	Rabbit
Applications	WB
Species Cross-Reactivity	Human; Mouse
Recommended dilutions	WB 1:500-2000
Immunogen	Synthesized peptide derived from human DCD2C AA range: 266-316
Specificity	This antibody detects endogenous levels of DCD2C at Human/Mouse
Formulation	Liquid in PBS containing 50% glycerol, 0.5% BSA and 0.02% sodium azide.
Storage	Store at -20°C. Avoid repeated freeze-thaw cycles.
Protein Name	DCD2C
Gene Name	DCDC2C
Cellular localization	Cell projection, cilium, flagellum . Cytoplasm . Detected along the length of the sperm flagellum and in the cytoplasm of the germ cells. .
Purification	The antibody was affinity-purified from rabbit antiserum by affinity-chromatography using epitope-specific immunogen.
Clonality	Polyclonal
Concentration	1 mg/ml
Observed band	38kD
Human Gene ID	
Human Swiss-Prot Number	A8MYV0
Alternative Names	Doublecortin domain-containing protein 2C
Background	





ELK Biotechnology



Western blot analysis of lysates from PC-12 cells, primary antibody was diluted at 1:1000, 4° over night



+86-27-59760950

ELKbio@ELKbiotech.com

www.elkbiotech.com

23-2, No.388 Gaoxin 2nd Road, Wuhan East Lake Hi-tech Development Zone, Hubei, P.R.C.