

BGAT rabbit pAb

Cat No.:ES18059

For research use only

Overview

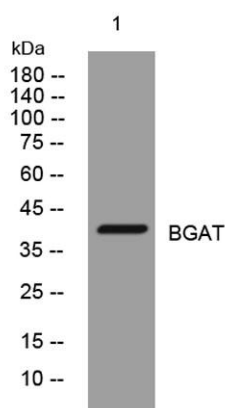
| | |
|--------------------------|---|
| Product Name | BGAT rabbit pAb |
| Host species | Rabbit |
| Applications | WB |
| Species Cross-Reactivity | Human; Mouse |
| Recommended dilutions | WB 1:500-2000 |
| Immunogen | Synthesized peptide derived from human BGAT AA range: 222-272 |
| Specificity | This antibody detects endogenous levels of BGAT at Human/Mouse |
| Formulation | Liquid in PBS containing 50% glycerol, 0.5% BSA and 0.02% sodium azide. |
| Storage | Store at -20°C. Avoid repeated freeze-thaw cycles. |
| Protein Name | BGAT |
| Gene Name | ABO |
| Cellular localization | Golgi apparatus, Golgi stack membrane; Single-pass type II membrane protein. Secreted. Membrane-bound form in trans cisternae of Golgi. Secreted into the body fluid. |
| Purification | The antibody was affinity-purified from rabbit antiserum by affinity-chromatography using epitope-specific immunogen. |
| Clonality | Polyclonal |
| Concentration | 1 mg/ml |
| Observed band | 38kD |
| Human Gene ID | 28 |
| Human Swiss-Prot Number | P16442 |
| Alternative Names | Histo-blood group ABO system transferase (Fucosylglycoprotein 3-alpha-galactosyltransferase) (Fucosylglycoprotein alpha-N-acetylgalactosaminyltransferase) (Glycoprotein-fucosylgalactoside alpha-N-acetylgalactosaminyltransferase) (EC 2.4.1.40) (Glycoprotei |





Background

This gene encodes proteins related to the first discovered blood group system, ABO. Which allele is present in an individual determines the blood group. The 'O' blood group is caused by a deletion of guanine-258 near the N-terminus of the protein which results in a frameshift and translation of an almost entirely different protein. Individuals with the A, B, and AB alleles express glycosyltransferase activities that convert the H antigen into the A or B antigen. Other minor alleles have been found for this gene. [provided by RefSeq, Jul 2008],



Western blot analysis of lysates from HeLa cells, primary antibody was diluted at 1:1000, 4° over night

