

SRGP2 rabbit pAb

Cat No.:ES12954

For research use only

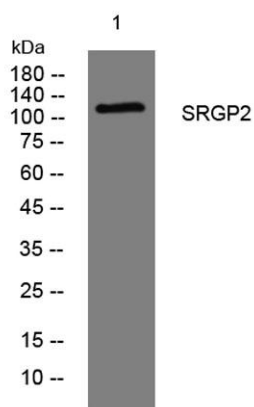
Overview

Product Name	SRGP2 rabbit pAb
Host species	Rabbit
Applications	WB
Species Cross-Reactivity	Human; Mouse;Rat
Recommended dilutions	WB 1: 500-2000
Immunogen	Synthesized peptide derived from human SRGP2 AA range: 476-526
Specificity	This antibody detects endogenous levels of SRGP2 at Human/Mouse/Rat
Formulation	Liquid in PBS containing 50% glycerol, 0.5% BSA and 0.02% sodium azide.
Storage	Store at -20°C. Avoid repeated freeze-thaw cycles.
Protein Name	SRGP2
Gene Name	SRGAP2 ARHGAP34 FNBP2 KIAA0456 SRGAP2A
Cellular localization	Cell membrane . Cell projection, dendritic spine . Cell junction, synapse, postsynaptic density . Cell junction, synapse, postsynaptic cell membrane . Cell projection, lamellipodium . Cytoplasmic vesicle, phagosome . Nucleus . Cytoplasm, cytosol . Recruit
Purification	The antibody was affinity-purified from rabbit antiserum by affinity-chromatography using epitope-specific immunogen.
Clonality	Polyclonal
Concentration	1 mg/ml
Observed band	
Human Gene ID	23380
Human Swiss-Prot Number	O75044
Alternative Names	
Background	This locus encodes a member of the SLIT-ROBO Rho GTPase activating protein family. The encoded protein stimulates GTPase activity of Rac1, and plays a role in cortical neuron development. This locus has several paralogs on human chromosome 1 resulting





from segmental duplication. While this locus itself is conserved among various species, the paralogs are found only in the genus Homo, and not in the genomes of non-human great apes. Alternatively spliced transcript variants have been described for this locus. [provided by RefSeq, Jul 2014],



Western blot analysis of lysates from CACO2 cells, primary antibody was diluted at 1:1000, 4° over night

