

VGLU1 rabbit pAb

Cat No.:ES12371

For research use only

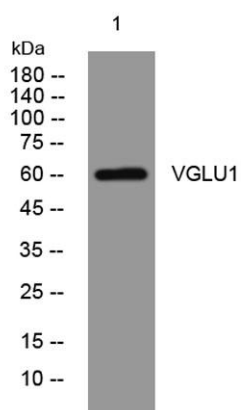
Overview

Product Name	VGLU1 rabbit pAb
Host species	Rabbit
Applications	WB
Species Cross-Reactivity	Human; Mouse;Rat
Recommended dilutions	WB 1:500-2000
Immunogen	Synthesized peptide derived from human VGLU1 AA range: 488-538
Specificity	This antibody detects endogenous levels of VGLU1 at Human/Mouse/Rat
Formulation	Liquid in PBS containing 50% glycerol, 0.5% BSA and 0.02% sodium azide.
Storage	Store at -20°C. Avoid repeated freeze-thaw cycles.
Protein Name	VGLU1
Gene Name	SLC17A7 BNPI VGLUT1
Cellular localization	Cytoplasmic vesicle, secretory vesicle, synaptic vesicle membrane . Membrane ; Multi-pass membrane protein . Cell junction, synapse, synaptosome .
Purification	The antibody was affinity-purified from rabbit antiserum by affinity-chromatography using epitope-specific immunogen.
Clonality	Polyclonal
Concentration	1 mg/ml
Observed band	60kD
Human Gene ID	57030
Human Swiss-Prot Number	Q9P2U7
Alternative Names	Vesicular glutamate transporter 1 (VGLUT1) (Brain-specific Na(+)-dependent inorganic phosphate cotransporter) (Solute carrier family 17 member 7)
Background	The protein encoded by this gene is a vesicle-bound, sodium-dependent phosphate transporter that is specifically expressed in the neuron-rich regions of





the brain. It is preferentially associated with the membranes of synaptic vesicles and functions in glutamate transport. The protein shares 82% identity with the differentiation-associated Na-dependent inorganic phosphate cotransporter and they appear to form a distinct class within the Na⁺/Pi cotransporter family. [provided by RefSeq, Jul 2008],



Western blot analysis of lysates from MCF-7 cells, primary antibody was diluted at 1:1000, 4° over night

