

S26A8 rabbit pAb

Cat No.:ES13248

For research use only

Overview

Product Name	S26A8 rabbit pAb
Host species	Rabbit
Applications	WB
Species Cross-Reactivity	Human; Mouse
Recommended dilutions	WB 1:500-2000
Immunogen	Synthesized peptide derived from human S26A8 AA range: 82-132
Specificity	This antibody detects endogenous levels of S26A8 at Human/Mouse
Formulation	Liquid in PBS containing 50% glycerol, 0.5% BSA and 0.02% sodium azide.
Storage	Store at -20°C. Avoid repeated freeze-thaw cycles.
Protein Name	S26A8
Gene Name	SLC26A8 TAT1
Cellular localization	Membrane ; Multi-pass membrane protein . Located at the annulus ring structure within the sperm cell. .
Purification	The antibody was affinity-purified from rabbit antiserum by affinity-chromatography using epitope-specific immunogen.
Clonality	Polyclonal
Concentration	1 mg/ml
Observed band	105kD
Human Gene ID	116369
Human Swiss-Prot Number	Q96RN1
Alternative Names	Testis anion transporter 1 (Anion exchange transporter) (Solute carrier family 26 member 8)
Background	This gene encodes a member of the SLC26 gene family of anion transporters. Family members are well conserved in gene structure and protein length yet have markedly different tissue expression patterns. The expression of this gene appears to be restricted to spermatocytes. Alternatively spliced transcript variants that encode different isoforms

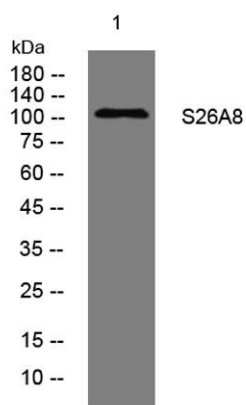




ELK Biotechnology

have been described. [provided by RefSeq, Jul 2010],

Western blot analysis of lysates from U2OS cells, primary antibody was diluted at 1:1000, 4° over night



+86-27-59760950

ELKbio@ELKbiotech.com

www.elkbiotech.com

23-2, No.388 Gaoxin 2nd Road, Wuhan East Lake Hi-tech Development Zone, Hubei, P.R.C.