

# KLHL2 rabbit pAb

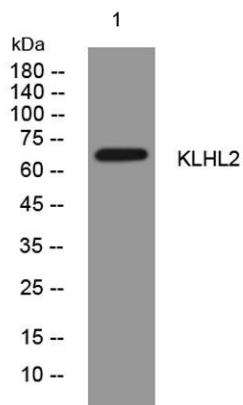
Cat No.:ES15283

For research use only

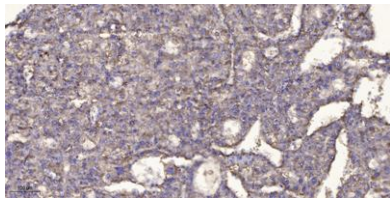
## Overview

Product Name	KLHL2 rabbit pAb
Host species	Rabbit
Applications	WB;ELISA;IHC
Species Cross-Reactivity	Human; Mouse
Recommended dilutions	WB 1:500-2000;IHC-p 1:50-300; ELISA 2000-20000
Immunogen	Synthesized peptide derived from human KLHL2 AA range: 521-571
Specificity	This antibody detects endogenous levels of KLHL2 at Human/Mouse
Formulation	Liquid in PBS containing 50% glycerol, 0.5% BSA and 0.02% sodium azide.
Storage	Store at -20°C. Avoid repeated freeze-thaw cycles.
Protein Name	KLHL2
Gene Name	KLHL2
Cellular localization	Cytoplasm, cytoskeleton. Cell projection, ruffle. Cell projection . Cell projection, lamellipodium . Cytoplasm, cytosol. A proportion colocalizes with the actin cytoskeleton. When over-expressed, colocalizes with NPTXR in perinuclear aggresomes (By simila
Purification	The antibody was affinity-purified from rabbit antiserum by affinity-chromatography using epitope-specific immunogen.
Clonality	Polyclonal
Concentration	1 mg/ml
Observed band	
Human Gene ID	11275
Human Swiss-Prot Number	O95198
Alternative Names	
Background	





Western blot analysis of lysates from MCF-7 cells, primary antibody was diluted at 1:1000, 4° over night



Immunohistochemical analysis of paraffin-embedded human liver cancer. 1, Antibody was diluted at 1:200(4° overnight). 2, Tris-EDTA, pH9.0 was used for antigen retrieval. 3, Secondary antibody was diluted at 1:200(room temperature, 45min).

