



KCTD6 rabbit pAb

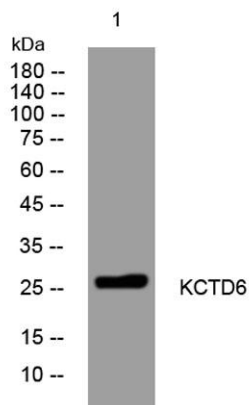
Cat No.:ES15341

For research use only

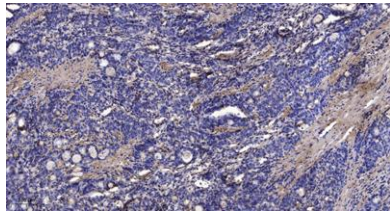
Overview

Product Name	KCTD6 rabbit pAb
Host species	Rabbit
Applications	WB;IHC
Species Cross-Reactivity	Human; Mouse
Recommended dilutions	WB 1:500-2000;IHC-p 1:50-300
Immunogen	Synthesized peptide derived from human KCTD6 AA range: 118-168
Specificity	This antibody detects endogenous levels of KCTD6 at Human/Mouse
Formulation	Liquid in PBS containing 50% glycerol, 0.5% BSA and 0.02% sodium azide.
Storage	Store at -20°C. Avoid repeated freeze-thaw cycles.
Protein Name	KCTD6
Gene Name	KCTD6
Cellular localization	Cytoplasm, myofibril, sarcomere, M line . Colocalizes with ANK1 isoform Mu17 at the M line in differentiated skeletal muscle cells and heart. .
Purification	The antibody was affinity-purified from rabbit antiserum by affinity-chromatography using epitope-specific immunogen.
Clonality	Polyclonal
Concentration	1 mg/ml
Observed band	
Human Gene ID	200845
Human Swiss-Prot Number	Q8NC69
Alternative Names	
Background	





Western blot analysis of lysates from A549 cells, primary antibody was diluted at 1:1000, 4° over night



Immunohistochemical analysis of paraffin-embedded human Gastric adenocarcinoma. 1, Antibody was diluted at 1:200(4° overnight). 2, Tris-EDTA,pH9.0 was used for antigen retrieval. 3,Secondary antibody was diluted at 1:200(room temperature, 45min).

