

# KPNA6 rabbit pAb

Cat No.:ES15271

For research use only

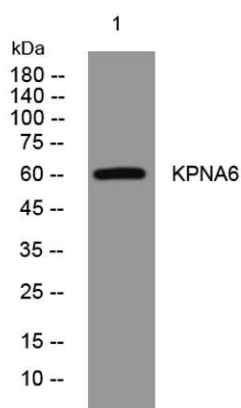
## Overview

Product Name	KPNA6 rabbit pAb
Host species	Rabbit
Applications	WB;IP
Species Cross-Reactivity	Human; Mouse
Recommended dilutions	WB 1:500-2000
Immunogen	Synthesized peptide derived from human KPNA6 AA range: 404-454
Specificity	This antibody detects endogenous levels of KPNA6 at Human/Mouse
Formulation	Liquid in PBS containing 50% glycerol, 0.5% BSA and 0.02% sodium azide.
Storage	Store at -20°C. Avoid repeated freeze-thaw cycles.
Protein Name	KPNA6
Gene Name	KPNA6 IPOA7
Cellular localization	nucleus,nuclear pore,nucleoplasm,cytoplasm,cytosol,membrane,
Purification	The antibody was affinity-purified from rabbit antiserum by affinity-chromatography using epitope-specific immunogen.
Clonality	Polyclonal
Concentration	1 mg/ml
Observed band	60kD
Human Gene ID	23633
Human Swiss-Prot Number	O60684
Alternative Names	Importin subunit alpha-7 (Karyopherin subunit alpha-6)
Background	Nucleocytoplasmic transport, a signal- and energy-dependent process, takes place through nuclear pore complexes embedded in the nuclear envelope. The import of proteins containing a nuclear localization signal (NLS) requires the NLS import receptor, a heterodimer of importin alpha and beta subunits also known as karyopherins.





Importin alpha binds the NLS-containing cargo in the cytoplasm and importin beta docks the complex at the cytoplasmic side of the nuclear pore complex. In the presence of nucleoside triphosphates and the small GTP binding protein Ran, the complex moves into the nuclear pore complex and the importin subunits dissociate. Importin alpha enters the nucleoplasm with its passenger protein and importin beta remains at the pore. The protein encoded by this gene is a member of the importin alpha family. [provided by RefSeq, Jul 2008],



Western blot analysis of lysates from HeLa cells, primary antibody was diluted at 1:1000, 4° over night

