

SKOR1 rabbit pAb

Cat No.:ES13091

For research use only

Overview

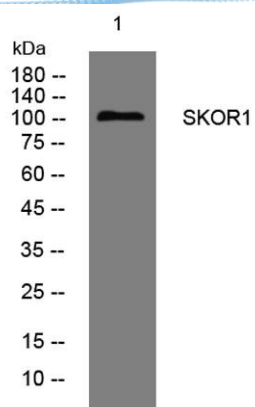
Product Name	SKOR1 rabbit pAb
Host species	Rabbit
Applications	WB
Species Cross-Reactivity	Human; Mouse;Rat
Recommended dilutions	WB 1:500-2000
Immunogen	Synthesized peptide derived from human SKOR1 AA range: 322-372
Specificity	This antibody detects endogenous levels of SKOR1 at Human/Mouse/Rat
Formulation	Liquid in PBS containing 50% glycerol, 0.5% BSA and 0.02% sodium azide.
Storage	Store at -20°C. Avoid repeated freeze-thaw cycles.
Protein Name	SKOR1
Gene Name	SKOR1 CORL1 FUSSEL15 LBXCOR1
Cellular localization	Nucleus .
Purification	The antibody was affinity-purified from rabbit antiserum by affinity-chromatography using epitope-specific immunogen.
Clonality	Polyclonal
Concentration	1 mg/ml
Observed band	105kD
Human Gene ID	390598
Human Swiss-Prot Number	P84550
Alternative Names	SKI family transcriptional corepressor 1 (Functional Smad-suppressing element on chromosome 15) (Fussel-15) (LBX1 corepressor 1) (Ladybird homeobox corepressor 1)

Background





ELK Biotechnology



Western blot analysis of lysates from KB cells, primary antibody was diluted at 1:1000, 4° over night



+86-27-59760950

ELKbio@ELKbiotech.com

www.elkbiotech.com

23-2, No.388 Gaoxin 2nd Road, Wuhan East Lake Hi-tech Development Zone, Hubei, P.R.C.