

# ANO3 rabbit pAb

Cat No.:ES18338

For research use only

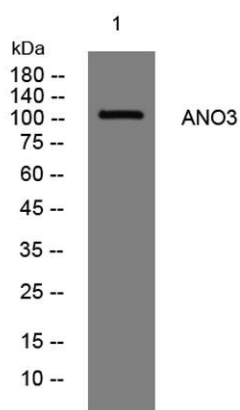
## Overview

Product Name	ANO3 rabbit pAb
Host species	Rabbit
Applications	WB
Species Cross-Reactivity	Human; Mouse
Recommended dilutions	WB 1: 500-2000
Immunogen	Synthesized peptide derived from human ANO3 AA range: 518-568
Specificity	This antibody detects endogenous levels of ANO3 at Human/Mouse
Formulation	Liquid in PBS containing 50% glycerol, 0.5% BSA and 0.02% sodium azide.
Storage	Store at -20°C. Avoid repeated freeze-thaw cycles.
Protein Name	ANO3
Gene Name	ANO3 C11orf25 TMEM16C GENX-3947
Cellular localization	Cell membrane ; Multi-pass membrane protein . Shows an intracellular localization. .
Purification	The antibody was affinity-purified from rabbit antiserum by affinity-chromatography using epitope-specific immunogen.
Clonality	Polyclonal
Concentration	1 mg/ml
Observed band	
Human Gene ID	63982
Human Swiss-Prot Number	Q9BYT9
Alternative Names	
Background	The protein encoded by this gene belongs to the TMEM16 family of predicted membrane proteins, that are also known as anoctamins. While little is known about the function of this gene, mutations in this gene have been associated with some cases of autosomal dominant craniocervical dystonia. Cells from individuals with a mutation in this gene exhibited abnormalities in endoplasmic





reticulum-dependent calcium signaling. Studies in rat show that the rat ortholog of this protein interacts with, and modulates the activity of a sodium-activated potassium channel. Deletion of this gene caused increased pain sensitivity in the rat model system. Alternative splicing results in multiple transcript variants encoding different isoforms. [provided by RefSeq, Aug 2015],



Western blot analysis of lysates from Jarkat cells, primary antibody was diluted at 1:1000, 4°over night

