

# NAT8L rabbit pAb

Cat No.:ES14556

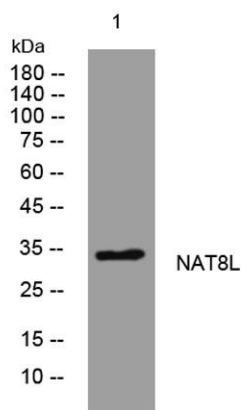
For research use only

## Overview

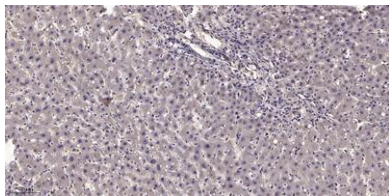
Product Name	NAT8L rabbit pAb
Host species	Rabbit
Applications	WB;ELISA;IHC
Species Cross-Reactivity	Human; Mouse;Rat
Recommended dilutions	WB 1:500-2000;IHC-p 1:50-300; ELISA 2000-20000
Immunogen	Synthesized peptide derived from human NAT8L AA range: 218-268
Specificity	This antibody detects endogenous levels of NAT8L at Human/Mouse/Rat
Formulation	Liquid in PBS containing 50% glycerol, 0.5% BSA and 0.02% sodium azide.
Storage	Store at -20°C. Avoid repeated freeze-thaw cycles.
Protein Name	NAT8L
Gene Name	NAT8L CML3
Cellular localization	Cytoplasm . Microsome membrane ; Single-pass membrane protein . Mitochondrion membrane ; Single-pass membrane protein . Endoplasmic reticulum membrane ; Single-pass membrane protein . Its enzymatic activity contribution is quantitatively larger in mitocho
Purification	The antibody was affinity-purified from rabbit antiserum by affinity-chromatography using epitope-specific immunogen.
Clonality	Polyclonal
Concentration	1 mg/ml
Observed band	
Human Gene ID	339983
Human Swiss-Prot Number	Q8N9F0
Alternative Names	
Background	This gene encodes a single-pass membrane protein, which contains a conserved sequence of the GCN5 or NAT superfamily of N-acetyltransferases and is a member of the N-acyltransferase (NAT) superfamily.



This protein is a neuron-specific protein and is the N-acetylaspartate (NAA) biosynthetic enzyme, catalyzing the NAA synthesis from L-aspartate and acetyl-CoA. NAA is a major storage and transport form of acetyl coenzyme A specific to the nervous system. The gene mutation results in primary NAA deficiency (hypoacetylaspartia). [provided by RefSeq, Dec 2010],



Western blot analysis of lysates from U2OS cells, primary antibody was diluted at 1:1000, 4° over night



Immunohistochemical analysis of paraffin-embedded human liver cancer. 1, Antibody was diluted at 1:200(4° overnight). 2, Tris-EDTA, pH9.0 was used for antigen retrieval. 3, Secondary antibody was diluted at 1:200(room temperature, 45min).

