

CYTSA rabbit pAb

Cat No.:ES17031

For research use only

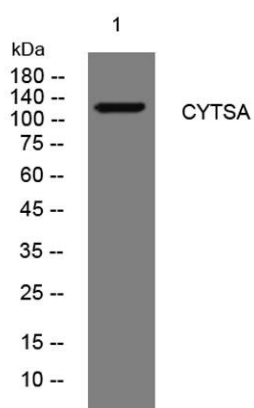
Overview

Product Name	CYTSA rabbit pAb
Host species	Rabbit
Applications	WB
Species Cross-Reactivity	Human; Mouse;Rat
Recommended dilutions	WB 1: 500-2000
Immunogen	Synthesized peptide derived from human CYTSA AA range: 150-200
Specificity	This antibody detects endogenous levels of CYTSA at Human/Mouse/Rat
Formulation	Liquid in PBS containing 50% glycerol, 0.5% BSA and 0.02% sodium azide.
Storage	Store at -20°C. Avoid repeated freeze-thaw cycles.
Protein Name	CYTSA
Gene Name	SPECC1L CYTSA KIAA0376
Cellular localization	Cytoplasm, cytoskeleton . Cytoplasm, cytoskeleton, spindle . Cell junction, gap junction . Colocalizes with acetylated alpha-tubulin, gamma-tubulin and F-actin. Also observed in a ring around gamma-tubulin containing centrioles possibly in the microtubule
Purification	The antibody was affinity-purified from rabbit antiserum by affinity-chromatography using epitope-specific immunogen.
Clonality	Polyclonal
Concentration	1 mg/ml
Observed band	
Human Gene ID	23384
Human Swiss-Prot Number	Q69YQ0
Alternative Names	
Background	This gene encodes a coiled-coil domain containing protein. The encoded protein may play a critical role in actin-cytoskeletal reorganization during facial morphogenesis. Mutations in this gene are a cause





of oblique facial clefting-1. Alternatively spliced transcript variants encoding multiple isoforms have been observed for this gene. A read-through transcript composed of SPECC1L (sperm antigen with calponin homology and coiled-coil domains 1-like) and the downstream ADORA2A (adenosine A2a receptor) gene sequence has been identified, but it is thought to be non-coding. [provided by RefSeq, Jun 2013],



Western blot analysis of lysates from HpeG2 cells, primary antibody was diluted at 1:1000, 4°over night

