

# TTF-1 (phospho-Ser327) rabbit pAb

Cat No.:ES12520

For research use only

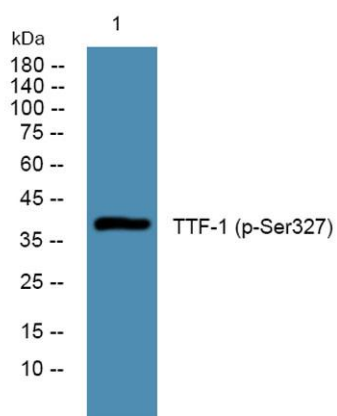
## Overview

Product Name	TTF-1 (phospho-Ser327) rabbit pAb
Host species	Rabbit
Applications	WB
Species Cross-Reactivity	Human;Rat;Mouse;
Recommended dilutions	WB 1:1000-2000
Immunogen	Synthesized phospho peptide around human TTF-1 (Ser327)
Specificity	This antibody detects endogenous levels of Human TTF-1 (phospho-Ser327)
Formulation	Liquid in PBS containing 50% glycerol, 0.5% BSA and 0.02% sodium azide.
Storage	Store at -20°C. Avoid repeated freeze-thaw cycles.
Protein Name	TTF-1 (Ser327)
Gene Name	NKX2-1 NKX2A TITF1 TTF1
Cellular localization	Nucleus .
Purification	The antibody was affinity-purified from rabbit antiserum by affinity-chromatography using epitope-specific immunogen.
Clonality	Polyclonal
Concentration	1 mg/ml
Observed band	38kD
Human Gene ID	7080
Human Swiss-Prot Number	P43699
Alternative Names	Homeobox protein Nkx-2.1 (Homeobox protein NK-2 homolog A) (Thyroid nuclear factor 1) (Thyroid transcription factor 1) (TTF-1)
Background	This gene encodes a protein initially identified as a thyroid-specific transcription factor. The encoded protein binds to the thyroglobulin promoter and regulates the expression of thyroid-specific genes but has also been shown to regulate the expression of genes involved in morphogenesis. Mutations and deletions in this gene are associated with benign





hereditary chorea, choreoathetosis, congenital hypothyroidism, and neonatal respiratory distress, and may be associated with thyroid cancer. Multiple transcript variants encoding different isoforms have been found for this gene. This gene shares the symbol/alias 'TTF1' with another gene, transcription termination factor 1, which plays a role in ribosomal gene transcription. [provided by RefSeq, Feb 2014],



Western blot analysis of lysates from HCT116 cells,  
primary antibody was diluted at 1:1000, 4° over night

