

MICA1 rabbit pAb

Cat No.:ES14949

For research use only

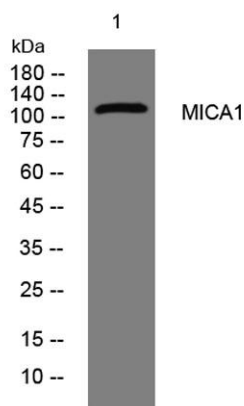
Overview

Product Name	MICA1 rabbit pAb
Host species	Rabbit
Applications	WB;IHC
Species Cross-Reactivity	Human; Mouse;Rat
Recommended dilutions	WB 1:500-2000;IHC-p 1:50-300
Immunogen	Synthesized peptide derived from human MICA1 AA range: 155-205
Specificity	This antibody detects endogenous levels of MICA1 at Human/Mouse/Rat
Formulation	Liquid in PBS containing 50% glycerol, 0.5% BSA and 0.02% sodium azide.
Storage	Store at -20°C. Avoid repeated freeze-thaw cycles.
Protein Name	MICA1
Gene Name	MICAL1 MICAL NICAL
Cellular localization	Cytoplasm. Cytoplasm, cytoskeleton. Midbody . Accumulates transiently at the abscission site before abscission occurs. .
Purification	The antibody was affinity-purified from rabbit antiserum by affinity-chromatography using epitope-specific immunogen.
Clonality	Polyclonal
Concentration	1 mg/ml
Observed band	
Human Gene ID	64780
Human Swiss-Prot Number	Q8TDZ2
Alternative Names	
Background	This gene encodes an enzyme that oxidizes methionine residues on actin, thereby promoting depolymerization of actin filaments. This protein interacts with and regulates signalling by NEDD9/CAS-L (neural precursor cell expressed, developmentally down-regulated 9). Alternative splicing results in multiple transcript variants.



[provided by RefSeq, Aug 2015],

Western blot analysis of lysates from Hela cells, primary antibody was diluted at 1:1000, 4° over night



Immunohistochemical analysis of paraffin-embedded human liver cancer. 1, Antibody was diluted at 1:200(4° overnight). 2, Tris-EDTA, pH9.0 was used for antigen retrieval. 3, Secondary antibody was diluted at 1:200(room temperature, 45min).

