

KIF1B rabbit pAb

Cat No.:ES15308

For research use only

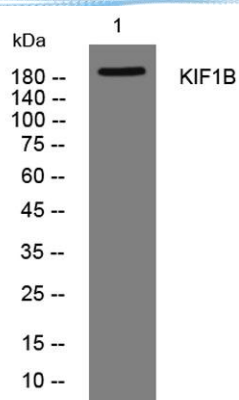
Overview

Product Name	KIF1B rabbit pAb
Host species	Rabbit
Applications	WB
Species Cross-Reactivity	Human; Mouse;Rat
Recommended dilutions	WB 1: 500-2000
Immunogen	Synthesized peptide derived from human KIF1B AA range: 1331-1381
Specificity	This antibody detects endogenous levels of KIF1B at Human/Mouse/Rat
Formulation	Liquid in PBS containing 50% glycerol, 0.5% BSA and 0.02% sodium azide.
Storage	Store at -20°C. Avoid repeated freeze-thaw cycles.
Protein Name	KIF1B
Gene Name	KIF1B KIAA0591 KIAA1448
Cellular localization	Cytoplasm, cytoskeleton. Mitochondrion . Cell projection, axon .; [Isoform 1]: Cytoplasmic vesicle, secretory vesicle, synaptic vesicle .
Purification	The antibody was affinity-purified from rabbit antiserum by affinity-chromatography using epitope-specific immunogen.
Clonality	Polyclonal
Concentration	1 mg/ml
Observed band	
Human Gene ID	23095
Human Swiss-Prot Number	O60333
Alternative Names	
Background	This gene encodes a motor protein that transports mitochondria and synaptic vesicle precursors. Mutations in this gene cause Charcot-Marie-Tooth disease, type 2A1. [provided by RefSeq, Jul 2008],





ELK Biotechnology



Western blot analysis of lysates from THP-1 cells, primary antibody was diluted at 1:1000, 4° over night



+86-27-59760950

ELKbio@ELKbiotech.com

www.elkbiotech.com

23-2, No.388 Gaoxin 2nd Road, Wuhan East Lake Hi-tech Development Zone, Hubei, P.R.C.